



SEAL & CYLINDER

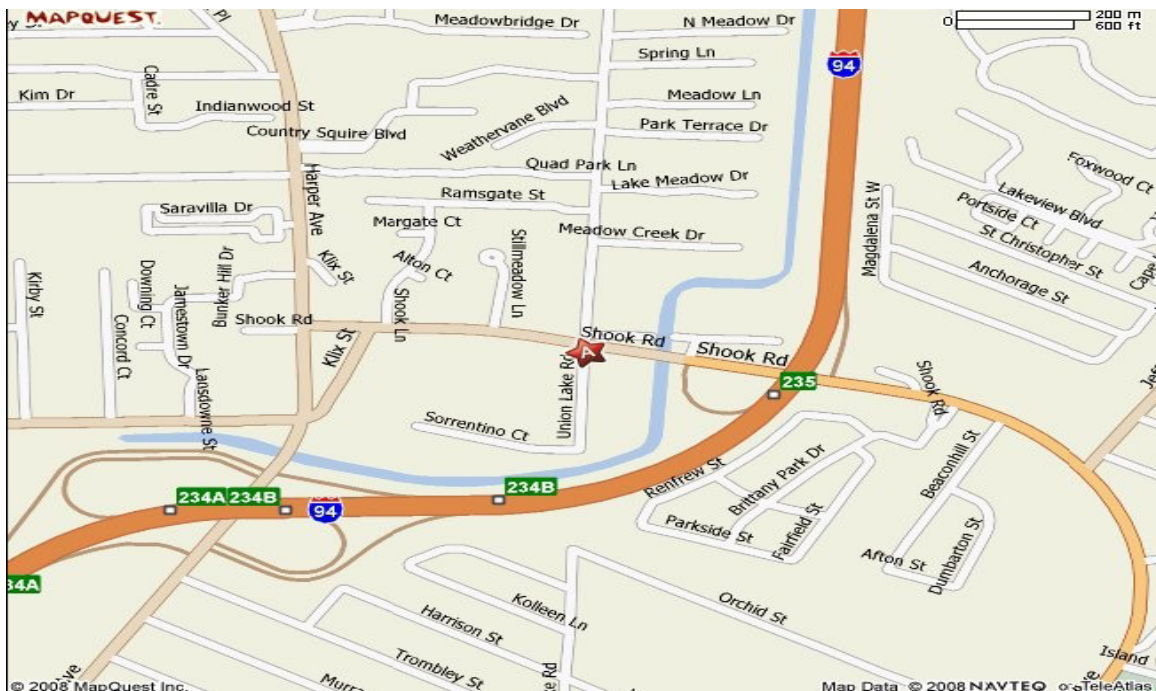
SOURCE, INC.

CYLINDERS & COMPONENTS CATALOG

1-877-905-7325

ABOUT US

Cylinder Source, Inc. is a family owned and operated business with over 25 years of automotive and industrial experience that strives to bring exceptional service to our customers. Cylinder Source makes every effort to be honest, friendly and cost effective each and every day. Our success comes as a product of hard work. Work that results in benefits for our customers. Our office and manufacturing facility is located at the intersection of Shook Road and Interstate 94 in Harrison Twp. Michigan.



Mission Statement

Cylinder Source, Inc. ***“More Than Cylinders...Solutions”*** is committed to continually exceed our customers expectations. No matter the scope of the project, or how challenging, we strive for perfection so we can achieve excellence.

We strive not only to provide exceptional cylinder repairs and fluid power components, but to find solutions to customer needs. We plan to meet our goals through:

- Strict quality standards that assure our customers that they are receiving world class products.
- Competitive pricing achieved by a commitment to invest in new technologies and to develop cost effective solutions in the manufacturing process.
- Hiring the best talent available and providing an environment that promotes growth and innovation.
- Uncompromised service to our customers and helping to find long term cost effective solutions to



President:
Seal & Cylinder Source

Jarrett Dygas
Office 586-791-9001 ext 3
Cell 586-291-2272
jadygas@seal-source.com

Accounting:
Seal Source
Seal & Cylinder Source

Jennifer Dygas
Office 586-791-9001 ext 4
Office 586-791-9009 ext 4
Fax: 586-791-9033

Sales Manager:
Seal & Cylinder Source

Jon Dygas
586-791-9001 ext 6
Cell 586-216-9743
jond@seal-source.com

Machine Shop Manager
Cylinder Source & Seal Source

Jason Jordan
586-791-9001 ext 5
jjordan@cylinder-source.com

Manufacturing Manager:
Seal & Cylinder Source

Matt Meyer ext 7
Office 586-791-9001
Cell 586-260-0408

- Please make all checks out to the company noted on the invoice.
- Hours of operation are 8:00am to 5:00pm Mon. to Fri.
- Emergency 24 hr service is available. Please contact your account manager for help.



Cylinder Source & Seal Source 35380 Union Lake Road Harrison Twp, Mi. 48045

PRODUCTS AND SERVICES

1-877-905-SEAL

O-RINGS

SQUARE CUT RINGS

QUAD RING

Standard

Metric

(Japanese and European)

Cord

Vulcanized

O-ring Kits

(Standard and Metric)

Buna-N

Viton®

Teflon®

BACK-UP RINGS

Contoured

Solid

Split

Spiral

ROD SEALS

(Standard and Metric)

U-cups

Twin lip U-cups

Buffer Seals

PTFE Glide rings

PolyPak Type-B®

ROTORY SHAFT SEALS

Metal Cased

Non-Metal Press Fit

PTFE Rotary Glide Rings

PISTON SEALS

(Standard and Metric)

U-cups

Piston Cups

Z-seals

Double Acting Piston Cups

PTFE Glide Rings

PolyPak®

Capped T-seals

W-packing

E-packing

Flared U-cup

Multiple Piece Piston Seals

Cast-Iron Piston Rings

WIPER/SCRAPERS

Snap-In

Twin lip

Seal-Guard Metallic

Press Fit

Metal clad

PTFE Wipers

CUSTOM MACHINED SEALS .375 TO 150"

WEARBANDS / BEARINGS

PTFE

Phenolic

Polyester resin

Glass Filled

Bronze

V-PACKING / RINGS

Spiral Cut To 150" For Injection

Molding and Hydraulic Presses

Neoprene and Cotton Duck

Teflon®

Viton®

Urethane®

GASKETS

Die Cut

Water Jet

Handhole/Manhole

Envelope

Flange

Spiral Wound

Grafoil®

Vellumoid®

Non-Abestos

SHEET PACKING

Vellumoid

Rubber

Teflon®

Grafoil®

Viton®

Compressed Non-Asbestos

MECHANICAL SEALS

Single

Double

Cartridge

Repairs

BRAIDED PACKING

Graphite

Teflon®

Lantern Rings

HIGH TEMPERATURE TEXTILES

Blankets

Curtians

Gloves

Gaskets

Tape

Rope

TOOLS

O-ring Extraction

O-ring Measuring

Packing Pullers

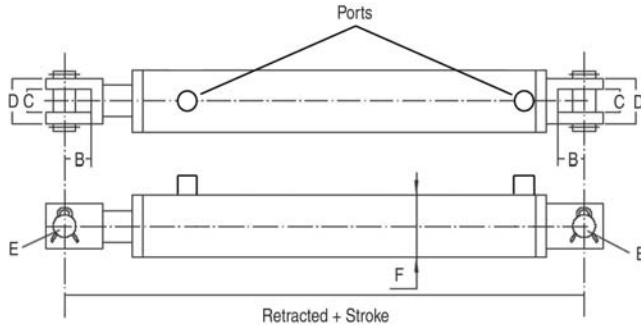
Gasket Cutting



CLEVIS WELDED CYLINDERS

THE HCW LINE

2500 and 3000 PSI DOUBLE ACTING CYLINDERS (4" Bore = 3000 PSI, 5" Bore = 2500 PSI)



FEATURES:

- Skived, honed tubing
- Heavy duty welded construction
- Chromed, ground & polished piston rod will operate at full pressure through 16" stroke
- Cast iron piston, cast steel butt, gland & clevis
- Loaded u-seal & urethane wiper in gland, u-seal on piston
- Threaded gland
- Pins & clips included
- Standard color is black
- Stroke control may be installed on 8" strokes

CYLINDERS

Bore	B	C	D	E	F	Ports(NPT)
2.00	2.125	1.125	2.07	1.00	2.5	3/8 NPT
2.50	2.125	1.125	2.07	1.00	3.0	1/2 NPT
3.00	2.125	1.125	2.07	1.00	3.5	1/2 NPT
3.50	2.125	1.125	2.07	1.00	4.0	1/2 NPT
4.00	2.000	1.125	2.07	1.00	4.5	1/2 NPT
5.00	2.000	1.500	2.44	1.00	5.5	1/2 NPT

PART NUMBER	BORE	STROKE (INCH)	ROD DIA (INCH)	PIN CENTERS RE-TRACTED (INCH)	PIN CENTERS EXTENDED (INCH)	WEIGHT LBS	PRICE
HCW-2004	2.00	4	1-1/4"	14.25	18.25	12.79	\$ 107.46
HCW-2006	2.00	6	1-1/4"	16.25	22.25	14.55	107.46
HCW-2008	2.00	8	1-1/4"	18.25	28.25	16.32	114.05
HCW-2010	2.00	10	1-1/4"	20.25	30.25	17.86	121.47
HCW-2012	2.00	12	1-1/4"	22.25	34.25	19.40	127.10
HCW-2014	2.00	14	1-1/4"	24.25	38.25	21.17	134.1
HCW-2016	2.00	16	1-1/4"	26.25	42.25	22.93	144.38
HCW-2018	2.00	18	1-1/4"	28.25	46.25	24.48	153.13
HCW-2020	2.00	20	1-1/4"	30.25	50.25	26.24	158.58
HCW-2024	2.00	24	1-1/4"	34.25	58.25	29.55	173.05
HCW-2028	2.00	28	1-1/4"	38.25	66.25	32.85	179.97
HCW-2030	2.00	30	1-1/4"	40.25	70.25	34.62	217.9
HCW-2032	2.00	32	1-1/4"	42.25	74.25	36.16	232.82
HCW-2034	2.00	34	1-1/4"	44.25	78.25	37.93	238.05
HCW-2036	2.00	36	1-1/4"	46.25	82.25	39.69	242.77
HCW-2504	2.50	4	1-1/2"	14.25	18.25	16.98	116.5
HCW-2506	2.50	6	1-1/2"	16.25	22.25	19.18	116.5
HCW-2508	2.50	8	1-1/2"	20.25	28.25	21.39	124.00
HCW-2510	2.50	10	1-1/2"	20.25	30.25	23.37	132.7
HCW-2512	2.50	12	1-1/2"	22.25	34.25	25.58	137.33
HCW-2514	2.50	14	1-1/2"	24.25	38.25	27.78	147.49
HCW-2516	2.50	16	1-1/2"	26.25	42.25	29.77	152.94
HCW-2518	2.50	18	1-1/2"	28.25	46.25	31.97	160.19
HCW-2520	2.50	20	1-1/2"	30.25	50.25	34.18	173.05
HCW-2524	2.50	24	1-1/2"	34.25	58.25	38.37	186.00
HCW-2528	2.50	28	1-1/2"	38.25	66.25	42.56	205.39



CLEVIS WELDED CYLINDERS

THE HCW LINE

2500 and 3000 PSI DOUBLE ACTING CYLINDERS (4" Bore = 3000 PSI, 5" Bore = 2500 PSI)

CYLINDERS

PART NUMBER	BORE	STROKE (INCH)	ROD DIA (INCH)	PIN CENTERS RE-TRACTED (INCH)	PIN CENTERS EXTENDED (INCH)	WEIGHT LBS	PRICE
HCW-2530	2.50	30	1-1/2"	40.25	70.25	44.76	\$ 230.04
HCW-2532	2.50	32	1-1/2"	42.25	74.25	46.97	247.63
HCW-2534	2.50	34	1-1/2"	44.25	78.25	48.95	251.8
HCW-2536	2.50	36	1-1/2"	46.25	82.25	51.16	256.14
HCW-3004	3.00	4	1-1/2"	14.25	18.25	21.83	130.09
HCW-3006	3.00	6	1-1/2"	16.25	22.25	24.26	130.09
HCW-3008	3.00	8	1-1/2"	18.25	28.25	26.90	138.70
HCW-3010	3.00	10	1-1/2"	20.25	30.25	29.11	150.01
HCW-3012	3.00	12	1-1/2"	22.25	34.25	31.53	163.34
HCW-3014	3.00	14	1-1/2"	24.25	38.25	33.96	170.40
HCW-3016	3.00	16	1-1/2"	26.25	42.25	36.60	177.82
HCW-3018	3.00	18	1-1/2"	28.25	46.25	39.03	184.60
HCW-3020	3.00	20	1-1/2"	30.25	50.25	41.45	194.99
HCW-3024	3.00	24	1-1/2"	34.25	58.25	46.31	218.22
HCW-3028	3.00	28	1-1/2"	38.25	66.25	51.16	242.31
HCW-3030	3.00	30	1-1/2"	40.25	70.25	53.58	252.39
HCW-3032	3.00	32	1-1/2"	42.25	74.25	56.23	266.22
HCW-3034	3.00	34	1-1/2"	44.25	78.25	58.65	276.07
HCW-3036	3.00	36	1-1/2"	46.25	82.25	61.08	285.87
HCW-3504	3.50	4	1-3/4"	14.25	18.25	26.24	153.86
HCW-3506	3.50	6	1-3/4"	16.25	22.25	29.33	153.86
HCW-3508	3.50	8	1-3/4"	18.25	28.25	32.41	163.34
HCW-3510	3.50	10	1-3/4"	20.25	30.25	35.50	170.40
HCW-3512	3.50	12	1-3/4"	22.25	34.25	38.59	180.06
HCW-3514	3.50	14	1-3/4"	24.25	38.25	41.67	188.22
HCW-3516	3.50	16	1-3/4"	26.25	42.25	44.76	209.05
HCW-3518	3.50	18	1-3/4"	28.25	46.25	48.07	221.68
HCW-3520	3.50	20	1-3/4"	30.25	50.25	51.16	233.61
HCW-3524	3.50	24	1-3/4"	34.25	58.25	57.33	251.89
HCW-3528	3.50	28	1-3/4"	38.25	66.25	63.50	293.71
HCW-3530	3.50	30	1-3/4"	40.25	70.25	66.59	321.55
HCW-3532	3.50	32	1-3/4"	42.25	74.25	69.90	331.77
HCW-3534	3.50	34	1-3/4"	44.25	78.25	72.99	346.42
HCW-3536	3.50	36	1-3/4"	46.25	82.25	76.07	361.04
HCW-4004	4.00	4	2"	14.25	18.25	30.65	186.66
HCW-4006	4.00	6	2"	16.25	22.25	34.40	186.66
HCW-4008	4.00	8	2"	18.25	28.25	39.25	186.66
HCW-4010	4.00	10	2"	20.25	30.25	42.12	214.91
HCW-4012	4.00	12	2"	22.25	34.25	46.08	228.52
HCW-4014	4.00	14	2"	24.25	38.25	50.05	247.71
HCW-4016	4.00	16	2"	26.25	42.25	53.80	257.01
HCW-4018	4.00	18	2"	28.25	46.25	57.77	267.18
HCW-4020	4.00	20	2"	30.25	50.25	61.52	279.00
HCW-4024	4.00	24	2"	34.25	58.25	69.46	293.48
HCW-4028	4.00	28	2"	38.25	66.25	77.18	335.94
HCW-4030	4.00	30	2"	40.25	70.25	81.14	360.30
HCW-4032	4.00	32	2"	42.25	74.25	84.89	379.26

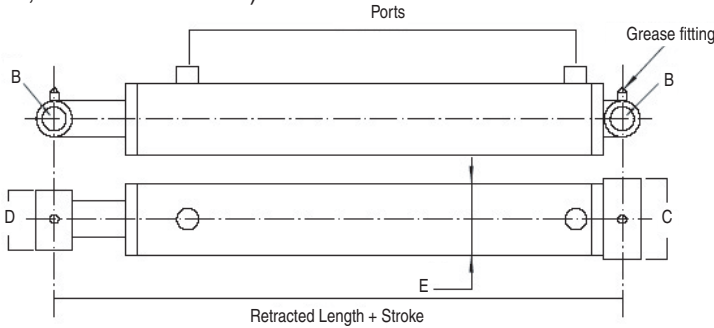


HMW MECHANICAL WELDED CYLINDERS

CYLINDERS

THE HMW LINE

2500 and 3000 PSI DOUBLE ACTING CYLINDERS (4" Bore = 3000 PSI, 5" Bore = 2500 PSI)



FEATURES:

- Honed tubing
- Heavy duty welded construction
- Chromed, ground & polished piston rod
- Cast iron piston & gland
- Pin eye mounting on both ends
- Loaded u-seal & urethane wiper in gland
- O-ring/backup washers & u-seals for piston seals
- Threaded gland retainer
- Standard color is black

Bore	B	C	D	E	Ports(NPT)
1.50	0.77	2.25	2.00	2.0	1/4 NPT
2.00	1.02	2.75	2.25	2.5	3/8 NPT
2.50	1.02	3.25	2.25	3.0	1/2 NPT
3.00	1.02	3.75	2.25	3.5	1/2 NPT
3.50	1.27	4.25	2.25	4.0	1/2 NPT
4.00	1.52	4.75	2.50	4.5	1/2 NPT
5.00	1.77	5.75	3.25	5.5	1/2 NPT

PART NUMBER	BORE	STROKE (INCH)	ROD DIA (INCH)	PIN CENTERS RETRACTED (INCH)	PIN CENTERS EXTENDED (INCH)	WEIGHT LBS	PRICE
HMW-1504	1.50	4	1"	12.00	16.00	9.04	\$ 103.65
HMW-1506	1.50	6	1"	14.00	20.00	10.14	113.83
HMW-1508	1.50	8	1"	16.00	24.00	11.47	122.84
HMW-1510	1.50	10	1"	18.00	28.00	12.79	130.50
HMW-2008	2.00	8	1-1/4"	16.00	24.00	13.45	114.05
HMW-2010	2.00	10	1-1/4"	18.00	28.00	15.21	121.47
HMW-2012	2.00	12	1-1/4"	20.00	32.00	16.98	127.10
HMW-2014	2.00	14	1-1/4"	22.00	36.00	18.74	134.16
HMW-2016	2.00	16	1-1/4"	24.00	40.00	20.51	144.38
HMW-2018	2.00	18	1-1/4"	26.00	44.00	22.27	152.54
HMW-2020	2.00	20	1-1/4"	28.00	48.00	24.03	158.58
HMW-2024	2.00	24	1-1/4"	32.00	56.00	27.56	173.05
HMW-2028	2.00	28	1-1/4"	36.00	64.00	31.09	179.97
HMW-2030	2.00	30	1-1/4"	38.00	68.00	32.85	217.99
HMW-2032	2.00	32	1-1/4"	40.00	72.00	34.84	232.82
HMW-2036	2.00	36	1-1/4"	44.00	80.00	38.37	242.77
HMW-2040	2.00	40	1-1/4"	48.00	88.00	41.90	269.43
HMW-2048	2.00	48	1-1/4"	56.00	104.00	48.95	322.56
HMW-2508	2.50	8	1-1/2"	16.00	24.00	19.85	124.00
HMW-2510	2.50	10	1-1/2"	18.00	28.00	21.83	132.79
HMW-2512	2.50	12	1-1/2"	20.00	32.00	24.03	137.33
HMW-2514	2.50	14	1-1/2"	22.00	36.00	26.24	147.49
HMW-2516	2.50	16	1-1/2"	24.00	40.00	28.44	152.94



HMW MECHANICAL WELDED CYLINDERS

THE HMW LINE

2500 and 3000 PSI DOUBLE ACTING CYLINDERS (4" Bore = 3000 PSI, 5" Bore = 2500 PSI)

CYLINDERS

PART NUMBER	BORE	STROKE (INCH)	ROD DIA (INCH)	PIN CENTERS RETRACTED (INCH)	PIN CENTERS EXTENDED (INCH)	WEIGHT LBS	PRICE
HMW-4032	4.00	32	2"	42.00	74.00	84.67	\$ 379.26
HMW-4036	4.00	36	2"	46.00	82.00	91.95	404.83
HMW-4040	4.00	40	2"	50.00	90.00	99.23	433.35
HMW-4048	4.00	48	2"	58.00	106.00	114.00	506.93
HMW-5008	5.00	8	2-1/2"	20.00	28.00	71.88	296.89
HMW-5010	5.00	10	2-1/2"	22.00	32.00	76.07	332.78
HMW-5012	5.00	12	2-1/2"	24.00	36.00	80.48	375.55
HMW-5014	5.00	14	2-1/2"	26.00	40.00	84.67	407.43
HMW-5016	5.00	16	2-1/2"	28.00	44.00	89.08	432.36
HMW-5018	5.00	18	2-1/2"	30.00	48.00	93.49	457.69
HMW-5020	5.00	20	2-1/2"	32.00	52.00	97.68	480.08
HMW-5024	5.00	24	2-1/2"	36.00	60.00	106.28	497.35
HMW-5028	5.00	28	2-1/2"	40.00	68.00	115.10	520.34
HMW-5030	5.00	30	2-1/2"	42.00	72.00	119.29	541.75
HMW-5032	5.00	32	2-1/2"	44.00	76.00	123.70	587.45
HMW-5036	5.00	36	2-1/2"	48.00	84.00	132.30	619.43
HMW-5040	5.00	40	2-1/2"	52.00	92.00	140.90	690.47
HMW-5048	5.00	48	2-1/2"	60.00	108.00	158.10	763.26



HMW MECHANICAL WELDED CYLINDERS

THE HMW LINE

2500 and 3000 PSI DOUBLE ACTING CYLINDERS (4" Bore = 3000 PSI, 5" Bore = 2500 PSI)

CYLINDERS

PART NUMBER	BORE	STROKE (INCH)	ROD DIA (INCH)	PIN CENTERS RETRACTED (INCH)	PIN CENTERS EXTENDED (INCH)	WEIGHT LBS	PRICE
HMW-4032	4.00	32	2"	42.00	74.00	84.67	\$ 379.26
HMW-4036	4.00	36	2"	46.00	82.00	91.95	404.83
HMW-4040	4.00	40	2"	50.00	90.00	99.23	433.35
HMW-4048	4.00	48	2"	58.00	106.00	114.00	506.93
HMW-5008	5.00	8	2-1/2"	20.00	28.00	71.88	296.89
HMW-5010	5.00	10	2-1/2"	22.00	32.00	76.07	332.78
HMW-5012	5.00	12	2-1/2"	24.00	36.00	80.48	375.55
HMW-5014	5.00	14	2-1/2"	26.00	40.00	84.67	407.43
HMW-5016	5.00	16	2-1/2"	28.00	44.00	89.08	432.36
HMW-5018	5.00	18	2-1/2"	30.00	48.00	93.49	457.69
HMW-5020	5.00	20	2-1/2"	32.00	52.00	97.68	480.08
HMW-5024	5.00	24	2-1/2"	36.00	60.00	106.28	497.35
HMW-5028	5.00	28	2-1/2"	40.00	68.00	115.10	520.34
HMW-5030	5.00	30	2-1/2"	42.00	72.00	119.29	541.75
HMW-5032	5.00	32	2-1/2"	44.00	76.00	123.70	587.45
HMW-5036	5.00	36	2-1/2"	48.00	84.00	132.30	619.43
HMW-5040	5.00	40	2-1/2"	52.00	92.00	140.90	690.47
HMW-5048	5.00	48	2-1/2"	60.00	108.00	158.10	763.26



CLEVIS WELDED CYLINDERS

THE HCW LINE

2500 and 3000 PSI DOUBLE ACTING CYLINDERS (4" Bore = 3000 PSI, 5" Bore = 2500 PSI)

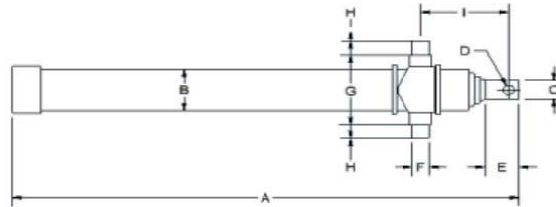
PART NUMBER	BORE	STROKE (INCH)	ROD DIA (INCH)	PIN CENTERS RE-TRACTED (INCH)	PIN CENTERS EXTENDED (INCH)	WEIGHT LBS	Price
HCW-4034	4.00	34	2"	44.25	78.25	88.86	\$ 392.04
HCW-4036	4.00	36	2"	46.25	82.25	92.61	402.01
HCW-5004	5.00	4	2-1/2"	16.25	20.25	63.95	305.66
HCW-5006	5.00	6	2-1/2"	18.25	24.25	68.36	305.66
HCW-5008	5.00	8	2-1/2"	18.25	28.25	72.77	317.66
HCW-5010	5.00	10	2-1/2"	22.25	32.25	77.18	332.78
HCW-5012	5.00	12	2-1/2"	24.25	36.25	81.59	375.55
HCW-5014	5.00	14	2-1/2"	26.25	40.25	86.00	407.43
HCW-5016	5.00	16	2-1/2"	28.25	44.25	90.41	432.36
HCW-5018	5.00	18	2-1/2"	30.25	48.25	94.82	457.60
HCW-5020	5.00	20	2-1/2"	32.25	52.25	99.23	480.08
HCW-5024	5.00	24	2-1/2"	36.25	60.25	108.05	497.35
HCW-5028	5.00	28	2-1/2"	40.25	68.25	116.87	520.34
HCW-5030	5.00	30	2-1/2"	42.25	72.25	121.28	541.75
HCW-5032	5.00	32	2-1/2"	44.25	76.25	125.69	587.45
HCW-5034	5.00	34	2-1/2"	46.25	80.25	130.10	603.43
HCW-5036	5.00	36	2-1/2"	48.25	84.25	134.51	619.43

CYLINDERS

THE HTC LINE

3000 PSI SINGLE ACTING CYLINDERS

7 Tons and 12 Tons Inverse



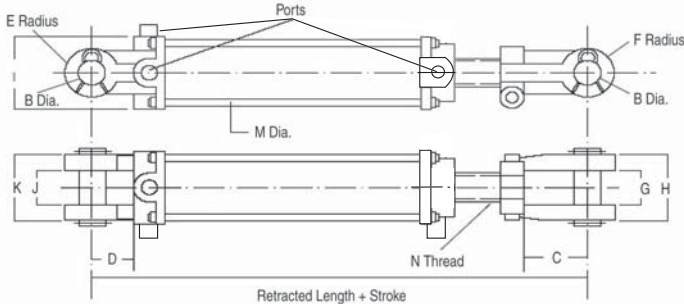
PART NUMBER	CAPACITY	STROKE	CLOSED (A)	B	C	D	E	F	G	H	I	PORT	WEIGHT LBS.	PRICE
HTC-3378	7 TONS	78"	35.5"	4	2	1.0625	2.25	1.25	6.5	1.25	7	1/2" NPT	108 LBS	\$ 550.94
HTC-3390	7 TONS	90"	39.5"	4	2	1.0625	2.5	1.25	6.5	1.25	7	1/2" NPT	100 LBS	585.88
HTC-33108	7 TONS	108"	45"	4	2	1.0625	2.5	1.25	6.5	1.25	7	1/2" NPT	120 LBS	634.00
HTC-4378	12 TONS	78"	34.75"	5	2	1.0625	2.25	1.5	7.5	1.5	7	1/2" NPT	129 LBS	689.48
HTC-4390	12 TONS	90"	38.75"	5	2	1.0625	2.25	1.5	7.5	1.5	7	1/2" NPT	129 LBS	730.30
HTC-43108	12 TONS	108"	44.75"	5	2	1.0625	2.25	1.5	7.5	1.5	7	1/2" NPT	156 LBS	788.79
HTC-43120	12 TONS	120"	48.75"	5	2	1.0625	2.25	1.5	7.5	1.5	7	1/2" NPT	167 LBS	854.55



HTR TIE-ROD CYLINDERS

THE HTR LINE

2500 PSI DOUBLE ACTING CYLINDERS



FEATURES:

- Ductile iron piston.
- Ductile iron gland, drilled oil passages.
- Honed steel tube, precision finished for extended seal life.
- High tensile, hard chrome plated rod.
- Ductile iron end mounts, female clevises with pins and clips included.
- Tube Seal: O-ring
- Rod Seal: Deep polypak with B lip design; metal canned wiper.
- 2-Piece 93A urethane piston seal, with a 70A nitrile energizer.
- All Seals: Manufactured to US specifications.

CYLINDERS

BORE (INCH)	B	C	D	E	F	G = J
2.0	1.015	2.125	1.625	1.000	1.000	1.142
2.5	1.015	2.125	1.625	1.000	1.000	1.142
3.0	1.015	2.125	1.625	1.125	1.000	1.142
3.5	1.015	2.125	1.625	1.125	1.125	1.142
4.0	1.015	2.125	1.625	1.125	1.125	1.142
5.0	1.015	2.125	2.250	1.250	1.500	1.260

PART NUMBER	BORE (INCH)	STROKE	ROD DIA (INCH)	H	I	K	M	N	TUBE OD	PORTS (NPTF)	PIN CTR RETRACT-ED	WT LBS.	PRICE
HTR-2004	2.0	4	1-1/8	2.520	2.835	2.520	M10	1-1/8-12UNF	2.375	3/8 NPT	14.25	14.30	\$ 78.66
HTR-2006	2.0	6	1-1/8	2.520	2.835	2.520	M10	1-1/8-12UNF	2.375	3/8 NPT	16.25	15.84	85.92
HTR-2008	2.0	8	1-1/8	2.520	2.835	2.520	M10	1-1/8-12UNF	2.375	3/8 NPT	18.25	17.60	87.59
HTR-2008A	2.0	8	1-1/8	2.520	2.835	2.520	M10	1-1/8-12UNF	2.375	3/8 NPT	20.25	17.60	83.59
HTR-2010	2.0	10	1-1/8	2.520	2.835	2.520	M10	1-1/8-12UNF	2.375	3/8 NPT	20.25	18.70	96.61
HTR-2012	2.0	12	1-1/8	2.520	2.835	2.520	M10	1-1/8-12UNF	2.375	3/8 NPT	22.25	20.24	94.93
HTR-2014	2.0	14	1-1/8	2.520	2.835	2.520	M10	1-1/8-12UNF	2.375	3/8 NPT	24.25	22.00	106.91
HTR-2016	2.0	16	1-1/8	2.520	2.835	2.520	M10	1-1/8-12UNF	2.375	3/8 NPT	26.25	23.54	110.01
HTR-2018	2.0	18	1-1/8	2.520	2.835	2.520	M10	1-1/8-12UNF	2.375	3/8 NPT	28.25	25.08	117.18
HTR-2020	2.0	20	1-1/8	2.520	2.835	2.520	M10	1-1/8-12UNF	2.375	3/8 NPT	30.25	26.62	121.76
HTR-2024	2.0	24	1-1/8	2.520	2.835	2.520	M10	1-1/8-12UNF	2.375	3/8 NPT	34.25	29.70	133.24
HTR-2048	2.0	48	1-1/4	2.520	2.835	2.520	M10	1-1/8-12UNF	2.375	3/8 NPT	58.25	35.00	254.63
HTR-2504	2.5	4	1-1/8	2.520	3.150	2.520	M10	1-1/8-12UNF	2.875	3/8 NPT	14.25	16.28	90.06
HTR-2506	2.5	6	1-1/8	2.520	3.150	2.520	M10	1-1/8-12UNF	2.875	3/8 NPT	16.25	18.04	90.06
HTR-2508	2.5	8	1-1/8	2.520	3.150	2.520	M10	1-1/8-12UNF	2.875	3/8 NPT	18.25	20.24	94.42
HTR-2508A	2.5	8	1-1/4	2.520	3.150	2.520	M10	1-1/8-12UNF	2.875	3/8 NPT	20.25	22.00	94.42
HTR-2510	2.5	10	1-1/8	2.520	3.150	2.520	M10	1-1/8-12UNF	2.875	3/8 NPT	20.25	21.34	105.54
HTR-2512	2.5	12	1-1/8	2.520	3.150	2.520	M10	1-1/8-12UNF	2.875	3/8 NPT	22.25	23.10	118.58
HTR-2514	2.5	14	1-1/8	2.520	3.150	2.520	M10	1-1/8-12UNF	2.875	3/8 NPT	24.25	24.86	124.90
HTR-2516	2.5	16	1-1/8	2.520	3.150	2.520	M10	1-1/8-12UNF	2.875	3/8 NPT	26.25	26.62	129.86
HTR-2518	2.5	18	1-1/8	2.520	3.150	2.520	M10	1-1/8-12UNF	2.875	3/8 NPT	28.25	28.38	135.43
HTR-2520	2.5	20	1-1/8	2.520	3.150	2.520	M10	1-1/8-12UNF	2.875	3/8 NPT	30.25	30.14	141.39
HTR-2524	2.5	24	1-1/8	2.520	3.150	2.520	M10	1-1/8-12UNF	2.875	3/8 NPT	34.25	33.66	152.82
HTR-2536	2.5	36	1-1/4	2.520	3.150	2.520	M10	1-1/4-12UNF	2.875	3/8 NPT	46.25	38.25	201.45
HTR-3004	3.0	4	1-1/4	2.600	3.740	2.520	M12	1-1/4-12UNF	3.375	1/2 NPT	14.25	21.56	103.56
HTR-3006	3.0	6	1-1/4	2.600	3.740	2.520	M12	1-1/4-12UNF	3.375	1/2 NPT	16.25	23.76	103.56
HTR-3008	3.0	8	1-1/4	2.600	3.740	2.520	M12	1-1/4-12UNF	3.375	1/2 NPT	18.25	26.62	105.63
HTR-3008A	3.0	8	1-3/8	2.600	3.740	2.520	M12	1-1/4-12UNF	3.375	1/2 NPT	20.25	27.50	107.82



HTR TIE-ROD CYLINDERS

THE HTR LINE

2500 PSI DOUBLE ACTING CYLINDERS

CYLINDERS

PART NUMBER	BORE (INCH)	STROKE	ROD DIA (INCH)	H	I	K	M	N	TUBE OD	PORTS (NPTF)	PIN CTR RETRACT-ED	WT LBS.	PRICE
HTR-3010	3.0	10	1-1/4	2.600	3.740	2.520	M12	1-1/4-12UNF	3.375	1/2 NPT	20.25	28.16	\$ 119.38
HTR-3012	3.0	12	1-1/4	2.600	3.740	2.520	M12	1-1/4-12UNF	3.375	1/2 NPT	22.25	30.36	129.86
HTR-3014	3.0	14	1-1/4	2.600	3.740	2.520	M12	1-1/4-12UNF	3.375	1/2 NPT	24.25	32.56	135.63
HTR-3016	3.0	16	1-1/4	2.600	3.740	2.520	M12	1-1/4-12UNF	3.375	1/2 NPT	28.25	34.76	141.19
HTR-3016A	3.0	16	1-3/8	2.600	3.740	2.520	M12	1-1/4-12UNF	3.375	1/2 NPT	31.50	42.90	156.51
HTR-3018	3.0	18	1-1/4	2.600	3.740	2.520	M12	1-1/4-12UNF	3.375	1/2 NPT	28.25	36.96	146.86
HTR-3020	3.0	20	1-1/4	2.600	3.740	2.520	M12	1-1/4-12UNF	3.375	1/2 NPT	30.25	39.16	164.95
HTR-3024	3.0	24	1-1/4	2.600	3.740	2.520	M12	1-1/4-12UNF	3.375	1/2 NPT	34.25	43.34	178.76
HTR-3030	3.0	30	1-1/4	2.600	3.740	2.520	M12	1-1/4-12UNF	3.375	1/2 NPT	40.25	48.00	213.51
HTR-3036	3.0	36	1-1/2	2.600	3.740	2.520	M12	1-1/4-12UNF	3.375	1/2 NPT	46.25	54.55	233.19
HTR-3048	3.5	48	1-1/2	2.600	4.130	2.520	M12	1-1/4-12UNF	3.875	1/2 NPT	58.25	74.69	277.64
HTR-3504	3.5	4	1-1/4	2.600	4.134	2.520	M12	1-1/4-12UNF	3.875	1/2 NPT	14.25	23.32	129.77
HTR-3506	3.5	6	1-1/4	2.600	4.134	2.520	M12	1-1/4-12UNF	3.875	1/2 NPT	16.25	25.52	123.11
HTR-3508	3.5	8	1-1/4	2.600	4.134	2.520	M12	1-1/4-12UNF	3.875	1/2 NPT	18.25	28.82	124.10
HTR-3508A	3.5	8	1-3/8	2.600	4.134	2.520	M12	1-1/4-12UNF	3.875	1/2 NPT	20.25	29.70	126.39
HTR-3510	3.5	10	1-1/4	2.600	4.134	2.520	M12	1-1/4-12UNF	3.875	1/2 NPT	20.25	29.92	135.63
HTR-3512	3.5	12	1-1/4	2.600	4.134	2.520	M12	1-1/4-12UNF	3.875	1/2 NPT	22.25	32.34	143.52
HTR-3514	3.5	14	1-1/4	2.600	4.134	2.520	M12	1-1/4-12UNF	3.875	1/2 NPT	24.25	34.76	154.61
HTR-3516	3.5	16	1-1/4	2.600	4.134	2.520	M12	1-1/4-12UNF	3.875	1/2 NPT	28.25	37.18	162.94
HTR-3516A	3.5	16	1-3/8	2.600	4.134	2.520	M12	1-1/4-12UNF	3.875	1/2 NPT	31.50	50.60	177.16
HTR-3518	3.5	18	1-1/4	2.600	4.134	2.520	M12	1-1/4-12UNF	3.875	1/2 NPT	28.25	39.60	172.06
HTR-3520	3.5	20	1-1/4	2.600	4.134	2.520	M12	1-1/4-12UNF	3.875	1/2 NPT	30.25	42.02	180.87
HTR-3524	3.5	24	1-1/2	2.600	4.134	2.520	M12	1-1/4-12UNF	3.875	1/2 NPT	34.25	51.70	209.15
HTR-3530	3.5	30	1-1/2	2.600	4.130	2.520	M12	1-1/4-12UNF	3.875	1/2 NPT	40.25	55.00	278.88
HTR-3532	3.5	32	1-1/2	2.600	4.130	2.520	M12	1-1/4-12UNF	3.875	1/2 NPT	42.25	58.00	259.99
HTR-3536	3.5	36	1-1/2	2.600	4.130	2.520	M12	1-1/4-12UNF	3.875	1/2 NPT	46.25	62.00	313.11
HTR-3548	3.5	48	1-1/2	2.600	4.130	2.600	M12	1-1/4-12UNF	3.875	1/2 NPT	58.25	74.69	350.30
HTR-4004	4.0	4	1-1/4	2.600	4.724	2.600	M12	1-1/4-12UNF	4.375	1/2 NPT	14.25	29.48	167.15
HTR-4006	4	6	1-1/4	2.600	4.724	2.600	M12	1-1/4-12UNF	4.375	1/2 NPT	16.25	33.60	163.58
HTR-4008	4.0	8	1-1/4	2.600	4.724	2.600	M12	1-1/4-12UNF	4.375	1/2 NPT	18.25	35.86	151.40
HTR-4008A	4.0	8	1-3/4	2.600	4.724	2.600	M12	1-1/4-12UNF	4.375	1/2NPT	20.25	37.40	161.51
HTR-4010	4.0	10	1-1/4	2.600	4.724	2.600	M12	1-1/4-12UNF	4.375	1/2 NPT	20.25	37.84	176.46
HTR-4012	4.0	12	1-1/4	2.600	4.724	2.600	M12	1-1/4-12UNF	4.375	1/2 NPT	22.25	40.70	187.63
HTR-4014	4.0	14	1-1/4	2.600	4.724	2.600	M12	1-1/4-12UNF	4.375	1/2 NPT	24.25	43.56	203.36
HTR-4016	4.0	16	1-1/4	2.600	4.724	2.600	M12	1-1/4-12UNF	4.375	1/2 NPT	26.25	46.42	210.86
HTR-4016A	4.0	16	1-3/4	2.600	4.724	2.600	M12	1-1/4-12UNF	4.375	1/2NPT	31.50	57.20	210.89
HTR-4018	4.0	18	1-1/2	2.600	4.724	2.600	M12	1-1/4-12UNF	4.375	1/2 NPT	28.25	50.60	219.08
HTR-4020	4.0	20	1-1/2	2.600	4.724	2.600	M12	1-1/4-12UNF	4.375	1/2 NPT	30.25	53.46	228.94
HTR-4024	4.0	24	1-1/2	2.600	4.724	2.600	M12	1-1/4-12UNF	4.375	1/2 NPT	32.25	59.18	243.89
HTR-4024-2	4.0	24	2	2.600	4.724	2.600	M12	1-1/4-12UNF	4.375	1/2 NPT	34.25	68.00	260.33
HTR-4026	4.0	26	1-3/4	2.600	4.724	2.600	M12	1-1/4-12UNF	4.375	1/2 NPT	36.25	72.00	291.50
HTR-4030	4.0	30	1-3/4	2.600	4.724	2.600	M12	1-1/4-12UNF	4.375	1/2 NPT	40.25	75.00	312.38
HTR-4030-2	4.0	30	2	2.600	4.724	2.600	M12	1-1/4-12UNF	4.375	1/2 NPT	40.25	78.00	349.15
HTR-4036	4.0	36	1-3/4	2.600	4.724	2.600	M12	1-1/4-12UNF	4.375	1/2 NPT	46.25	82.00	353.08
HTR-4048	4.0	48	1-3/4	2.600	4.724	2.600	M12	1-1/4-12UNF	4.375	1/2 NPT	48.25	98.00	363.81
HTR-5004	5.0	4	1-1/2	2.677	6.000	3.500	M16	1-1/4-12UNF	5.453	1/2 NPT	16.25	53.46	268.37
HTR-5006	5.0	6	1-1/2	2.677	6.000	3.500	M16	1-1/4-12UNF	5.453	1/2 NPT	18.25	56.76	284.94



HTR TIE-ROD CYLINDERS

THE HTR LINE

2500 PSI DOUBLE ACTING CYLINDERS

PART NUMBER	BORE (INCH)	STROKE	ROD DIA (INCH)	H	I	K	M	N	TUBE OD	PORTS (NPTF)	PIN CTR RETRACT-ED	WT LBS.	PRICE	
HTR-5008	5.0	8	1-1/2	2.677	6.000	3.500	M16	1-1/4-12UNF	5.453	1/2 NPT	20.25	61.16	\$ 285.10	
HTR-5010	5.0	10	1-1/2	2.677	6.000	3.500	M16	1-1/4-12UNF	5.453	1/2 NPT	22.25	63.36	314.77	
HTR-5012	5.0	12	2	2.677	6.000	3.500	M16	1-1/4-12UNF	5.453	1/2 NPT	24.25	73.04	336.78	
HTR-5014	5.0	14	2	2.677	6.000	3.500	M16	1-1/4-12UNF	5.453	1/2 NPT	26.25	77.00	364.87	
HTR-5016	5.0	16	2	2.677	6.000	3.500	M16	1-1/4-12UNF	5.453	1/2 NPT	28.25	81.18	385.79	
HTR-5018	5.0	18	2	2.677	6.000	3.500	M16	1-1/4-12UNF	5.453	1/2 NPT	30.25	85.14	406.70	
HTR-5020	5.0	20	2	2.677	6.000	3.500	M16	1-1/4-12UNF	5.453	1/2 NPT	32.25	89.10	427.58	
HTR-5024	5.0	24	2	2.677	6.000	3.500	M16	1-1/4-12UNF	5.453	1/2 NPT	36.25	97.24	395.18	
HTR-5030	5.0	30	2	2.677	6.000	3.500	M16	1-1/4-12UNF	5.453	1/2 NPT	42.25	109.56	550.20	



SINGLE ACTING TELESCOPIC CYLINDERS



These cylinders are available from Custom Hoists, Commercial, Hycotel and SHC. Request the manufacturer you want.



Fluid Capacity: Volume To Fully Extend			
Plunger Dia. (Inches)	Effective Area (Sq. Inches)	Load Capacity (Lbs. @ 2000 PSI)	Displacement (Gal./in. of Stroke)
3	7.07	14,140	.031
4	12.56	25,120	.054
5	19.63	39,260	.085
6	28.27	56,540	.122
7	38.48	76,960	.166
8.12	51.78	103,560	.224
8.25	53.46	106,920	.231
9.38	69.10	138,200	.299

Follow example to determine displacement of the complete cylinder **Example:** Model 824-200
 8.12 in. plunger .224
 7 in. plunger .166
 6 in. plunger .122
 5 in. plunger .085
 .597
 $.597 \times 200 = 29.8$ Gallons to fully extend
 4

Features

GENERAL DATA
 Operating pressures to 2000 psi. Plunger diameters range from 2" to 9.375". Lifting capacities to 138,200 lbs. Pin-eye mountings standard—trunion type available. Chrome-plated plungers available.

AUTOMATIC AIR BLEEDERS
 Every standard Hycotel single-acting telescopic cylinder comes equipped with an automatic air bleeder. This completely eliminates time-consuming and potentially hazardous manual air bleeding operation.

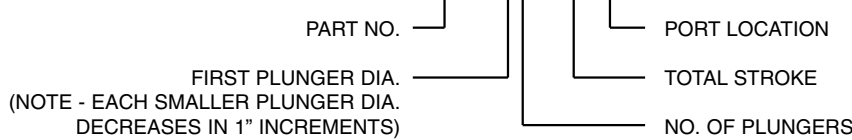
GUIDE RINGS & RETAINING RINGS
 Hycotel® features replaceable plunger guide rings, designed and balanced to be well lubricated and made of specially compounded material for long wearing performance. The retainer rings work in conjunction with the piston design to be positively locked into stop position grooves when the cylinder is fully extended.

"DUAL-LIP" WIPER
 This dual lip design wiper of Hytrel is a more efficient "dirt wiper." The dual lip provides an improved means of keeping dirt out.

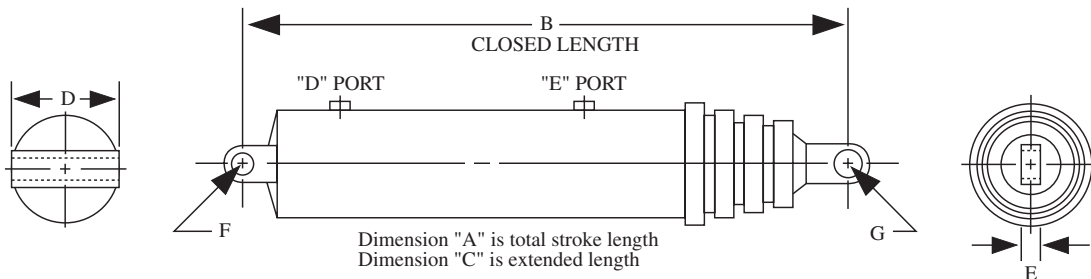
CYLINDERS

MANUFACTURERS SERVICE MANUALS ARE AVAILABLE. CALL FOR DETAILS.

Cylinder Identification C70000-814-200D



NOTE: "D" and "E" suffix in Part No. represents a specific port location.
 For dimensional data, consult our sales staff.
 A "T" suffix in Part No. represents Trunion Mount.

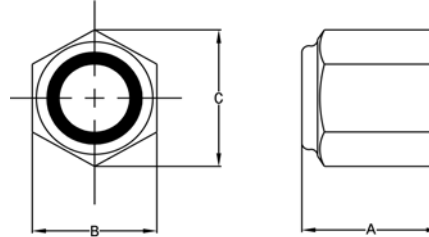




INDUSTRIAL COUPLINGS AND NUTS



Nylon Insert Lock Nut



PART NUMBER	BAR SIZE	A	B	C	PRICE
CM-LN45050	1/2"-20	0.60	0.75	0.84	\$ 4.14
CM-LN45062	5/8"-18	0.75	0.94	1.06	4.94
CM-LN45075	3/4"-16	0.88	1.06	1.19	18.03
CM-LN45087	7/8"-14	1.00	1.25	1.40	9.93
CM-LN45100	1"-14	1.06	1.44	1.62	11.56
CM-LN45101	1"-14	0.88	1.62	1.83	16.02
CM-LN45112	1-1/8"-12	1.19	1.62	1.83	11.56
CM-LN45126	1-1/4"-12	1.38	1.81	2.06	21.47
CM-LN45151	1-1/2"-12	1.62	2.19	2.44	21.06
CM-LN45152	1-1/2"-12	0.81	2.19	2.44	22.14
CM-LN45175	1-3/4"-12	1.50	2.75	3.06	47.20
CM-LN45200	2"-12	1.62	3.12	3.50	53.96
CM-LN45225	2-1/4"-12	1.94	3.50	3.94	114.90
CM-LN45226	2-1/4"-12	2.81	3.50	3.94	157.32
CM-LN45250	2-1/2"-12	2.25	4.00	4.60	249.12

INDUSTRIAL COUPLINGS AND NUTS



INDUSTRIAL MOUNTS

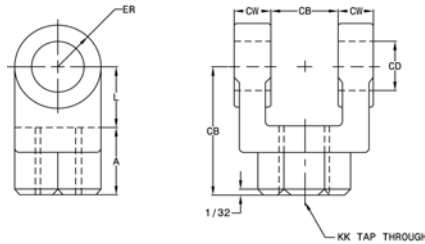
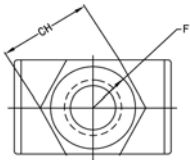


Rod Clevis

Material: 05, 07, 10
Forging 13 & Up Ductile
Iron Casting

PART NUMBER	CB	CD	CE	CH	CW	F	L	A	KK	ER	PRICE
CM-RC0500	0.765	1/2	1-1/2	1	1/2	1	3/4	3/4	7/16"-20	1/2	\$ 17.99
CM-RC0750	1.265	3/4	2-3/8	1-1/4	5/8	1-1/4	1-1/4	1-1/8	3/4"-16	3/4	38.29
CM-RC1000	1.515	1	3-1/8	1-1/2	3/4	1-1/2	1-1/2	1-5/8	1"-14	1	62.24
CM-RC1375	2.032	1-3/8	4-1/8	2	1	2	2-1/8	2	1-1/4"-12	1-3/8	125.82
CM-RC1750	2.531	1-3/4	4-1/2	2-3/8	1-1/4	2-3/8	2-1/4	2-1/4	1-1/2"-12	1-3/4	154.29
CM-RC2000	2.531	2	5-1/2	2-15/16	1-1/4	2-15/16	2-1/2	3	1-7/8"-12	2	253.48
CM-RC2500	3.032	2-1/2	6-1/2	3-1/2	1-1/2	3-1/2	3	3-1/2	2-1/4"-12	2-1/2	450.33
CM-RC3000	3.032	3	6-3/4	3-7/8	1-1/2	3-7/8	3-1/4	3-1/2	2-1/2"-12	2-3/4	677.79
CM-RC3500	4.032	3-1/2	8-1/2	5	2	5	4	4-1/2	3-1/4"-12	3-1/2	989.34
CM-RC4000	4.532	4	10	6-1/8	2-1/4	6-1/8	4-1/2	5-1/2	4"-12	4	1,727.40

* = Other Thread Sizes Available



INDUSTRIAL MOUNTS

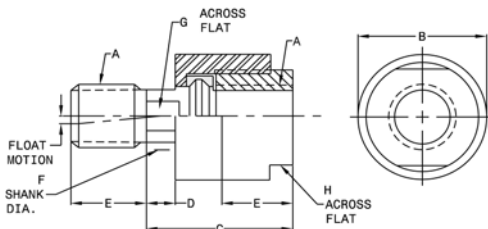


Alignment Coupler

1/16 Radial Float 2°
Spherical Motion

ALIGNMENT COUPLER	A	B	C	D	E	F	G	H	MAX PULL YIELD	PRICE
CM-BD-437	7/16"-20	1-1/4	2	1/2	3/4	5/8	1/2	1	10,000	\$ 77.82
CM-BD-500	1/2"-20	1-1/4	2	1/2	3/4	5/8	1/2	1	14,000	77.82
CM-BD-625	5/8"-18	1-1/4	2	1/2	3/4	5/8	1/2	1	19,000	92.28
CM-BD-750	3/4"-16	1-3/4	2-5/16	1/2	1-1/8	31/32	13/16	1-1/2	34,000	70.20
CM-BD-875	7/8"-14	1-3/4	2-5/16	1/2	1-1/8	31/32	13/16	1-1/2	39,000	106.77
CM-BD-1000	1"-14	2-1/2	2-15/16	1/2	1-5/8	1-3/8	1-5/32	2-1/4	64,000	141.58
CM-BD-1250	1-1/4"-12	2-1/2	2-15/16	1/2	1-5/8	1-3/8	1-5/32	2-1/4	78,000	215.32
CM-BD-1500	1-1/2"-12	3-1/4	4-3/8	13/16	2-1/4	1-3/4	1-1/2	3	134,000	555.60
CM-BD-1750	1-3/4"-12	3-1/4	4-3/8	13/16	2-1/4	1-3/4	1-1/2	3	134,000	474.06
CM-BD-1875	1-7/8"-12	3-3/4	5-7/16	7/8	3	2	1-7/8	3-1/2	240,000	590.99

NOTE: Metric Thread Sizes Also Available





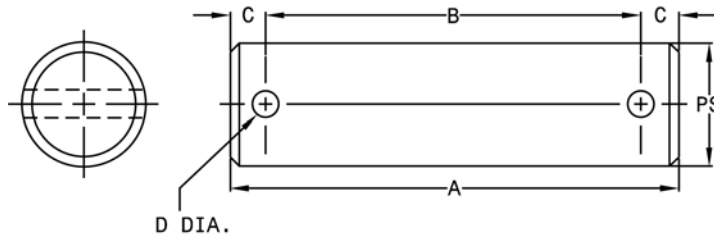
INDUSTRIAL MOUNTS



Material: 1144 Steel Nitrotec Treated Surface

Pivot Pin

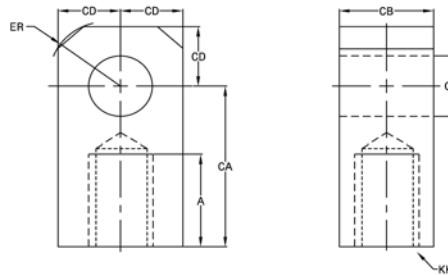
PART NUMBER	PIN SIZE	A	B	C	D	PRICE
CM-PP0500	0.500	2.281	1.938	0.172	0.106	\$ 5.51
CM-PP0750	0.750	3.094	2.719	0.188	0.140	6.37
CM-PP1000	1.000	3.594	3.219	0.188	0.140	15.09
CM-PP1375	1.375	4.656	4.250	0.203	0.173	24.11
CM-PP1750	1.750	5.656	5.250	0.203	0.173	38.25
CM-PP2000	2.000	5.719	5.281	0.219	0.204	46.41
CM-PP2500	2.500	6.781	6.313	0.234	0.219	73.26



Material: 05 thru 13, C.F. Bar
Material: 17 thru 40, Steel Plate

Rod Eyes

PART NUMBER	A	CA	CB	CD	ER	KK	PRICE
CM-RE0500	3/4	1-1/2	3/4	1/2	5/8	7/16"-20	\$ 16.05
CM-RE0750	1-1/8	2-1/16	1-1/4	3/4	7/8	3/4"-16	30.22
CM-RE1000	1-5/8	2-13/16	1-1/2	1	1-3/16	1"-14	49.47
CM-RE1375	2	3-7/16	2	1-3/8	1-9/16	1-1/4"-12	93.23
CM-RE1750	2-1/4	4	2-1/2	1-3/4	2	1-1/2"-12	120.59
CM-RE2000	3	5	2-1/2	2	2-1/2	1-7/8"-12	224.98
CM-RE2500	3-1/2	5-13/16	3	2-1/2	2-13/16	2-1/4"-12	305.37





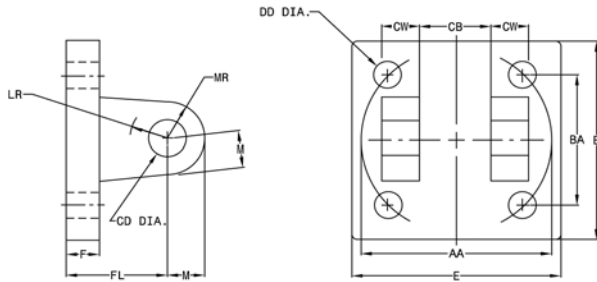
INDUSTRIAL MOUNTS



Clevis Bracket

PART NUMBER	AA	BA	CB	CD	CW	DD	E	F	FL	LR	M	MR	PRICE
CM-BDCB-07	3.6	2-9/16	1.265	3/4	5/8	1/2"-20	3-1/2	5/8	1-7/8	1-1/16	3/4	1-1/16	\$ 107.85
CM-BDCB-10	4.6	3-1/4	1.515	1	3/4	5/8"-18	4-1/2	3/4	2-1/4	1-1/4	1	1-1/8	180.93
CM-BDCB-13	5.4	3-13/16	2.032	1-3/8	1	5/8"-18	5	7/8	3	7/8	1-3/8	1-3/4	305.53
CM-BDCB-20	8.2	5-3/4	2.531	2	1-1/4	1"-14	7-1/2	1	3-12	2-1/8	2	2-1/8	606.23

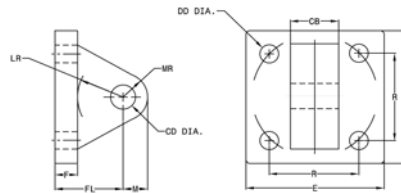
Material: Forging, Weldment, or Ductile Iron



INDUSTRIAL MOUNTS



Eye Bracket



Material: Forging, Weldment, or Ductile Iron

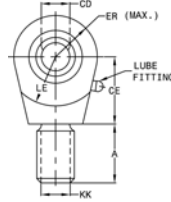
PART NUMBER	CB	CD	DD	E	F	FL	LR	M	MR	R	PRICE
CM-BDEB-05	3/4	1/2	13/32	2-1/2	3/8	1-1/8	3/4	1/2	9/16	1.63	\$ 27.36
CM-BDEB-07	1-1/4	3/4	17/32	3-1/2	5/8	1-7/8	1-1/4	3/4	7/8	2.56	50.58
CM-BDEB-10	1-1/2	1	21/32	4-1/2	3/4	2-1/4	1-1/2	1	1-1/4	3.25	82.57
CM-BDEB-13	2	1-3/8	21/32	5	7/8	3	2-1/8	1-3/8	1-5/8	3.81	141.91
CM-BDEB-17	2-1/2	1-3/4	29/32	6-1/2	7/8	3-1/8	2-1/4	1-3/4	2-1/8	4.95	279.83
CM-BDEB-20	2-1/2	2	1-1/16	7-1/2	1	3-1/2	2-1/2	2	2-7/16	5.75	413.54
CM-BDEB-25	3	2-1/2	1-3/16	8-1/2	1	4	3	2-1/2	3	6.59	527.30
CM-BDEB-30	3	3	1-5/16	9-1/2	1	4-1/4	3-1/4	3	3-1/4	7.50	738.06
CM-BDEB-35	4	3-1/2	1-13/16	12-5/8	1-11/16	5-11/16	4	3-1/2	4-1/8	9.62	1,085.48
CM-BDEB-40	4-1/2	4	2-1/16	14-7/8	1-15/16	6-7/16	4-1/2	4	5-1/4	11.50	2,021.25



INDUSTRIAL MOUNTS

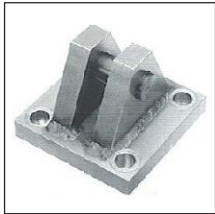


Spherical Rod Eye

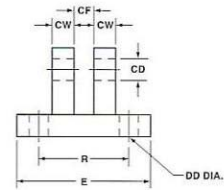
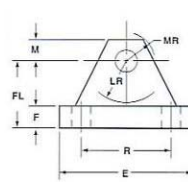


Material: Forging, Weldment, or Ductile Iron

PART NUMBER	CD	A	CE	EX	ER	LE	KK	JL REF	LOAD CAP	SPACER WIDTH	PRICE
CM-RES-05	0.500	11/16	7/8	7/16	7/8	3/4	7/16"-20	7/8	2,600	0.150	\$ 98.90
CM-RES-07	0.750	1	1-1/4	21/32	1-1/4	1-1/16	3/4"-16	1-5/16	9,400	0.250	123.81
CM-RES-10	1.000	1-1/2	1-7/8	7/8	1-3/8	1-7/16	1"-14	1-1/2	16,800	0.250	132.73
CM-RES-13	1.375	2	2-1/8	1-3/16	1-13/16	1-7/8	1-1/4"-12	2	28,600	0.375	187.96
CM-RES-17	1.750	2-1/8	2-1/2	1-17/32	2-3/16	2-1/8	1-1/2"-12	2-1/4	43,000	0.416	482.98
CM-RES-20	2.000	2-7/8	2-3/4	1-3/4	2-5/8	2-1/2	1-7/8"-12	2-3/4	70,000	0.375	645.01



Spherical Clevis Brackets



Material: Steel Weldment

PART NUMBER	E	F	M	R	CD	CF	CW	DD	FL	LR	MR	PRICE
CM-CBS-0500	3.00	.50	.50	2.05	.500	.44	.50	.41	1.50	.94	.62	\$ 102.10
CM-CBS-0750	3.75	.62	.88	2.76	.750	.66	.62	.53	2.00	1.38	1.00	163.36
CM-CBS-1000	5.50	.75	1.00	4.10	1.000	.88	.75	.53	2.50	1.69	1.19	204.18
CM-CBS-1375	6.50	.88	1.38	4.95	1.375	1.19	1.00	.66	3.50	2.44	1.62	306.27
CM-CBS-1750	8.50	1.25	1.75	6.58	1.750	1.53	1.25	.91	4.50	2.88	2.06	557.44
CM-CBS-2000	10.62	1.50	2.00	7.92	2.000	1.75	1.50	.91	5.00	3.31	2.38	875.96

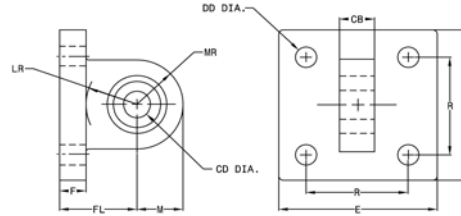


INDUSTRIAL MOUNTS



Material: Forging,
Weldment, or Ductile Iron

Spherical Eye Bracket

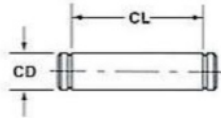


PART NUMBER	CB	CD	DD	E	F	FL	LR	M	MR	R	PRICE
CM-BDS-07	3/4	3/4	17/32	3-1/2	5/8	1-7/8	1-1/4	1-3/16	1-3/16	2.56	\$ 387.90
CM-BDS-10	1	1	21/32	4-1/2	3/4	2-1/4	1-1/2	1-3/8	1-3/8	3.25	458.13
CM-BDS-13	1-3/8	1-3/8	21/32	5	7/8	3	2-1/8	2	2	3.81	744.39



Material: CD1144

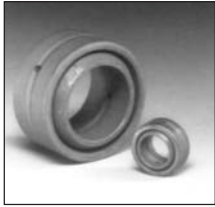
Pivot Pins for Spherical Clevis Brackets



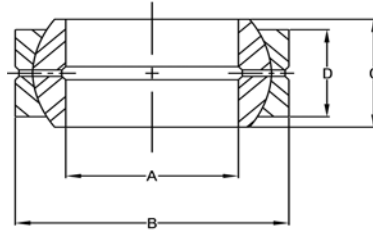
PART NUMBER	CD	CL	PRICE
CM-PPS0500	.4997-.0004	1 9/16	\$ 5.51
CM-PPS0750	.7497-.0005	2.1/32	6.37
CM-PPS1000	.9997-.0005	2 1/2	15.09
CM-PPS1375	1.3746-.0006	3 5/16	24.11
CM-PPS1750	1.7496-.0006	4 7/32	38.25
CM-PPS2000	1.9996-.0007	4 15/16	46.41



MOBILE SPHERICAL BEARINGS



Spherical Bearing



PART NUMBER	A	B	C	D	HOUSING DIAMETER	PRICE
CM-SB99062	0.6245/0.6250	1.0625/1.0620	0.547/0.542	0.469/0.464	1.0614/1.0622	\$ 33.32
CM-SB99075	0.7495/0.7500	1.2495/1.2500	0.656/0.651	0.562/0.557	1.2487/1.2497	33.49
CM-SB99100	0.9995/1.0000	1.6250/1.6245	0.875/0.870	0.750/0.745	1.6237/1.6247	33.82
CM-SB99125	1.2495/1.2500	2.0000/1.9995	1.093/1.087	0.937/0.932	1.9985/1.9997	42.21
CM-SB99137	1.3745/1.3750	2.1875/2.1869	1.187/1.182	1.031/1.026	2.1860/2.1872	50.27
CM-SB99150	1.4995/1.5000	2.4375/2.4369	1.312/1.307	1.125/1.120	2.4360/2.4372	57.95
CM-SB99175	1.7495/1.7500	2.8125/2.8119	1.531/1.526	1.312/1.307	2.8110/2.8122	72.94
CM-SB99200	1.9995/2.0000	3.1875/3.1869	1.750/1.745	1.500/1.495	3.1858/3.1871	95.63
CM-SB99225	2.2495/2.2500	3.5625/3.5617	1.969/1.964	1.687/1.682	3.5607/3.5621	131.28
CM-SB99250	2.4994/2.5000	3.9375/3.9367	2.187/2.182	1.875/1.870	3.9357/3.9371	165.41

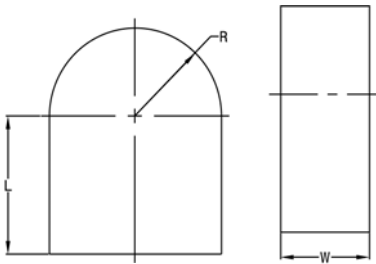
MOBILE SPHERICAL BEARINGS



MOBILE WELDED MOUNTS



Material: A-36 Plate



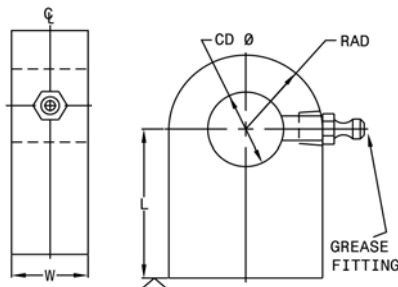
Mounting Lug

PART NUMBER	L	R	W	PRICE
CM-ML296	1.50	1.00	0.50	\$ 9.11
CM-ML297	1.50	1.00	0.62	8.80
CM-ML298	1.50	1.00	0.75	9.65
CM-ML299	1.75	1.25	1.00	12.78
CM-ML301	2.00	1.50	1.00	15.20
CM-ML302	2.50	2.00	1.00	20.55
CM-ML303	1.50	1.00	1.25	17.14
CM-ML304	1.50	1.12	1.50	15.28
CM-ML305	2.00	1.25	1.50	17.84
CM-ML306	1.75	1.50	1.50	18.70
CM-ML307	2.75	1.50	1.50	20.57
CM-ML308	1.75	1.25	2.00	19.74
CM-ML309	2.00	1.50	2.00	23.79
CM-ML310	2.12	1.50	2.00	24.27
CM-ML311	2.25	1.50	2.00	24.91
CM-ML312	3.00	1.50	2.00	29.53
CM-ML313	1.75	1.75	2.00	32.62
CM-ML314	1.88	1.75	2.00	35.33
CM-ML315	2.12	1.75	2.00	33.96
CM-ML316	2.50	1.75	2.00	172.48
CM-ML317	2.75	1.75	2.00	47.90
CM-ML318	3.00	2.00	2.00	51.76
CM-ML319	3.00	2.12	2.00	57.68
CM-ML320	3.12	2.50	2.00	83.46
CM-ML321	2.00	1.12	2.25	34.46
CM-ML322	2.25	1.75	2.25	55.68
CM-ML323	3.00	2.50	2.25	77.23
CM-ML324	3.00	2.50	2.50	69.91
CM-ML325	3.00	2.25	3.00	86.51
CM-ML326	3.00	2.00	3.25	91.80

MOBILE WELDED MOUNTS



Material: A-36 Plate



Mounting Lug

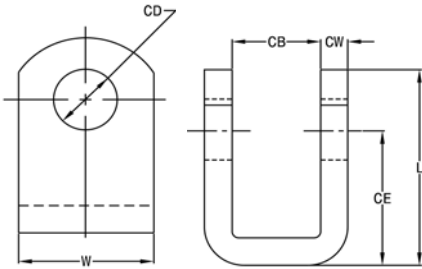
PART NUMBER	CD	L	RAD	W	GREASE FITTING	PRICE
CM-ML050100	1.00	2.00	1.00	0.50	N/A	\$ 27.20
CM-ML062100	1.00	2.00	1.00	0.62	N/A	27.20
CM-ML060333	1.00	2.12	1.00	0.75	N/A	36.17
CM-ML100100	1.00	2.00	1.00	1.00	N/A	37.01
CM-ML125100	1.00	2.00	1.00	1.25	1/8" NPT	43.60
CM-ML062125	1.25	2.50	1.25	0.62	N/A	32.04
CM-ML075125	1.25	2.50	1.25	0.75	N/A	37.01
CM-ML100125	1.25	2.50	1.25	1.00	N/A	38.35
CM-ML150125	1.25	2.50	1.25	1.50	1/8" NPT	51.80
CM-ML200125	1.25	2.50	1.25	2.00	1/8" NPT	59.95
CM-ML062150	1.50	2.50	1.50	0.62	N/A	31.59
CM-ML075150	1.50	2.50	1.50	0.75	N/A	36.72
CM-ML150150	1.50	2.50	1.50	1.50	1/8" NPT	58.01
CM-ML200150	1.50	2.50	1.50	2.00	1/8" NPT	60.39
CM-ML250150	1.50	2.50	1.50	2.50	1/8" NPT	69.12
CM-ML200200	2.00	3.00	2.00	2.00	1/8" NPT	88.48
CM-ML250200	2.00	3.00	2.00	2.50	1/8" NPT	106.20



MOBILE WELDED MOUNTS



Material: 1040 HF Bar



Formed Clevis

PART NUMBER	CB	CD	CE	CW	L	W	PRICE
CM-CL3011	0.75	0.50	1.50	0.38	2.25	1.25	\$ 22.71
CM-CL7337	1.06	0.75	2.00	0.38	3.12	1.75	34.85
CM-CL6547	1.25	1.00	2.50	0.50	3.62	2.00	36.69
CM-CL8278	0.88	1.00	2.93	0.50	4.06	2.00	37.27
CM-CL323	1.25	1.00	5.06	0.38	6.06	1.75	33.74
CM-B120753	1.50	1.12	2.12	0.50	3.25	2.25	44.72
CM-B120625	1.62	1.25	2.75	0.75	4.00	2.50	77.69
CM-80003	0.50	N/A	N/A	0.38	2.38	1.00	33.12
CM-80010	1.12	N/A	N/A	0.38	3.50	2.00	33.74
CM-B120829	1.50	N/A	N/A	0.50	3.25	2.50	68.83
CM-80001	1.12	N/A	N/A	0.50	4.00	2.00	27.97
CM-B120672	1.50	N/A	N/A	0.50	4.00	3.00	42.62
CM-B120760	1.12	1.00	2.12	0.62	3.38	2.50	62.24
CM-B120756	1.12	N/A	N/A	0.62	4.25	3.00	59.76
CM-80015	1.25	N/A	N/A	0.62	4.62	2.50	23.09
CM-B120613	1.62	N/A	N/A	0.75	4.00	2.50	50.84
CM-B120614	2.12	N/A	N/A	1.00	5.00	3.00	58.71

MOBILE WELDED MOUNTS



MOBILE MOUNTS

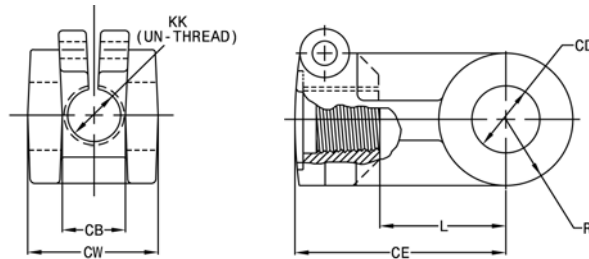


Mobile Split Clevis

PART NUMBER	CB	CD	CE	CW	KK	L	R	PRICE
CM-RC10033	1.12	1.00	3.25	2.62	1-1/16"-12	2.12	1.00	\$ 40.42
CM-RC10034	1.12	1.00	3.25	2.62	1-1/8"-12	2.12	1.00	39.65
CM-RC10035	1.12	1.00	3.25	2.62	1-1/4"-12	2.12	1.00	41.98
CM-RC11312	1.25	1.25	3.25	2.75	1-1/4"-12	2.12	1.25	67.24
CM-RC11412	1.25	1.25	4.00	2.75	1-1/4"-12	2.75	1.25	15.61

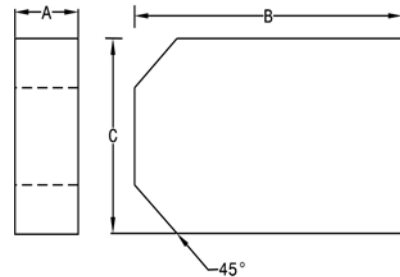
Material: Ductile Iron

Can be used on HTR Cylinders (page 11) or equivalent size cylinders.



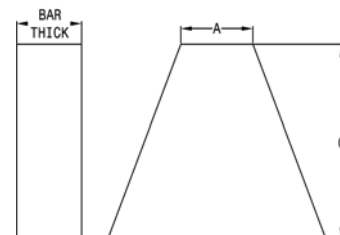
Mounting Ear

PART NUMBER	BAR SIZE	A	B	C	PRICE
CM-ME-100	1/2 x 1-1/4	1/2	1-1/4	1	\$ 4.27
CM-ME-200	5/8 x 2	5/8	2	1-1/2	5.73
CM-ME-300	3/4 x 2-1/2	3/4	2-1/2	2	10.29
CM-ME-400	1 x 3-1/2	1	3-1/2	2-3/4	18.85
CM-ME-500	1-1/4 x 4	1-1/4	4	3-1/2	31.22
CM-ME-600	1-1/4 x 4	1-1/4	4-1/2	4	48.61



Mounting Ear

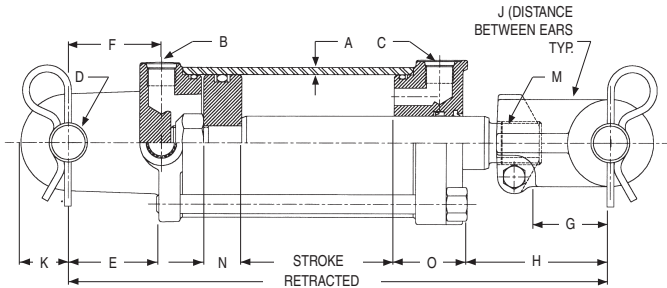
PART NUMBER	BAR SIZE	A	B	C	PRICE
CM-MEA-100	1/2 x 1-1/4	9/16	1-3/4	1-1/4	\$ 4.53
CM-MEA-200	5/8 x 2	7/8	2-3/4	2	5.73
CM-MEA-300	3/4 x 2-1/2	1-3/8	3-3/4	2-1/2	10.29
CM-MEA-400	1 x 3-1/2	1-3/4	5	3-1/2	18.85
CM-MEA-500	1-1/4 x 4	1-1/4	4	3-1/2	27.87
CM-MEA-600	1-1/4 x 4	1-1/4	6-3/4	4-1/2	48.61



TIE-ROD CYLINDERS



THE MAJESTIC AND ROYAL PLATE LINE 2500 PSI (MAJESTIC) AND 3000 PSI (ROYAL) DOUBLE ACTING TIE ROD CYLINDERS



FEATURES:

- Honed tubing (SAE-9000 & SAE 9100 series have cylinder finish tubing)
- Heavy duty, high strength tie rods
- Chromed, ground & polished piston rod will operate at full pressure through 16" stroke
- Cast iron piston, ductile iron butt, gland & clevis
- Carboxilated nitrile u-cup & urethane wiper in gland
- Pins & clips included
- Standard color is red
- Stroke control may be installed on 8" strokes
- Side ports available on request at no additional cost

CYLINDERS

PTR	MFGR NO.	BORE	STROKE	ROD DIA.	RE-TRACT. DIMEN.	A	B/C PORT SIZE	D	E	F	G	H	J	K	M	N	O	SHIP WT.	PRICE
PTR-2004	8404	2	4	1	14 1/4	1/8	3/4-16 SAE	1.015	2.5/16	2.7/16	1.13/16	3 1/4	1.06	15/16	1-14	7/8	2 1/4	18	\$ 166.11
PTR-2006	8406	2	6	1	16 1/4	1/8	3/4-16 SAE	1.015	2.5/16	2.7/16	1.13/16	3 1/4	1.06	15/16	1-14	7/8	2 1/4	19	169.73
PTR-2008	8408	2	8	1	20 1/4	1/8	3/4-16 SAE	1.015	2.5/16	2.7/16	1.13/16	3 1/4	1.06	15/16	1-14	7/8	2 1/4	20	174.89
PTR-2010	8410	2	10	1	20 1/4	1/8	3/4-16 SAE	1.015	2.5/16	2.7/16	1.13/16	3 1/4	1.06	15/16	1-14	7/8	2 1/4	21	178.99
PTR-2012	9012	2	12	1 1/8	22 1/4	1/8	3/4-16 SAE	1.015	2.7/16	2.3/8	1.13/16	3 1/4	1.06	15/16	1 1/8-12	7/8	2 3/8	25	207.90
PTR-2014	9014	2	14	1 1/8	24 1/4	1/8	3/4-16 SAE	1.015	2.7/16	2.3/8	1.13/16	3 1/4	1.06	15/16	1 1/8-12	7/8	2 3/8	26	212.23
PTR-2016A	9016	2	16	1 1/8	31 1/2	1/8	3/4-16 SAE	1.015	2.7/16	2.3/8	1.13/16	8 1/2	1.06	15/16	1 1/8-12	7/8	2 3/8	28	221.63
PTR-2018	9018	2	18	1 1/8	28 1/4	1/8	3/4-16 SAE	1.015	2.7/16	2.3/8	1.13/16	3 1/4	1.06	15/16	1 1/8-12	7/8	2 3/8	29	227.54
PTR-2020	9020	2	20	1 1/8	30 1/4	1/8	3/4-16 SAE	1.015	2.7/16	2.3/8	1.13/16	3 1/4	1.06	15/16	1 1/8-12	7/8	2 3/8	31	238.69
PTR-2024	9024	2	24	1 1/8	34 1/4	1/8	3/4-16 SAE	1.015	2.7/16	2.3/8	1.13/16	3 1/4	1.06	15/16	1 1/8-12	7/8	2 3/8	35	250.53
PTR-2030	9030	2	30	1 1/8	40 1/4	1/8	3/4-16 SAE	1.015	2.7/16	2.3/8	1.13/16	3 1/4	1.06	15/16	1 1/8-12	7/8	2 3/8	39	276.79
PTR-2506	7006	2 1/2	6	1 1/8	16 1/4	1/8	3/4-16 SAE	1.015	2.7/16	2.3/8	1.13/16	3 1/4	1.06	15/16	1 1/8-12	1	2 3/8	22	184.18
PTR-2508	9108	2 1/2	8	1 1/4	20 1/4	1/8	3/4-16 SAE	1.015	2.7/16	2.3/8	1.13/16	5 1/4	1.06	15/16	1 1/8-12	1	2 3/8	25	209.72
PTR-2510	9110	2 1/2	10	1 1/4	20 1/4	1/8	3/4-16 SAE	1.015	2.7/16	2.3/8	1.13/16	3 1/4	1.06	15/16	1 1/8-12	1	2 3/8	26	217.77
PTR-2512	9112	2 1/2	12	1 1/4	22 1/4	1/8	3/4-16 SAE	1.015	2.7/16	2.3/8	1.13/16	3 1/4	1.06	15/16	1 1/8-12	1	2 3/8	27	230.78
PTR-2514	9114	2 1/2	14	1 1/4	24 1/4	1/8	3/4-16 SAE	1.015	2.7/16	2.3/8	1.13/16	3 1/4	1.06	15/16	1 1/8-12	1	2 3/8	29	237.04
PTR-2516	9116	2 1/2	16	1 1/4	31 1/2	1/8	3/4-16 SAE	1.015	2.7/16	2.3/8	1.13/16	8 1/2	1.06	15/16	1 1/8-12	1	2 3/8	33	248.37
PTR-2518	9118	2 1/2	18	1 1/4	28 1/4	1/8	3/4-16 SAE	1.015	2.7/16	2.3/8	1.13/16	3 1/4	1.06	15/16	1 1/8-12	1	2 3/8	34	259.80
PTR-2520	9120	2 1/2	20	1 1/4	30 1/4	1/8	3/4-16 SAE	1.015	2.7/16	2.3/8	1.13/16	3 1/4	1.06	15/16	1 1/8-12	1	2 3/8	36	266.09
PTR-2524	9124	2 1/2	24	1 1/4	34 1/4	1/8	3/4-16 SAE	1.015	2.7/16	2.3/8	1.13/16	3 1/4	1.06	15/16	1 1/8-12	1	2 3/8	39	285.71
PTR-2530	9130	2 1/2	30	1 1/4	40 1/4	1/8	3/4-16 SAE	1.015	2.7/16	2.3/8	1.13/16	3 1/4	1.06	15/16	1 1/8-12	1	2 3/8	44	314.59
PTR-3006	7106	3	6	1 1/8	16 1/4	1/8	3/4-16 SAE	1.015	2.7/16	2.7/16	1.13/16	3 3/4	1.06	15/16	1 1/8-12	1	1 15/16	24	203.45
PTR-3008	9208	3	8	1 3/8	20 1/4	3/16	3/4-16 SAE	1.015	2.7/16	2.7/16	1.13/16	5 3/4	1.06	15/16	1 1/8-12	1	1 15/16	32	228.02
PTR-3010	9210	3	10	1 3/8	20 1/4	3/16	3/4-16 SAE	1.015	2.7/16	2.7/16	1.13/16	3 3/4	1.06	15/16	1 1/8-12	1	1 15/16	33	238.01
PTR-3012	9212	3	12	1 3/8	22 1/4	3/16	3/4-16 SAE	1.015	2.7/16	2.7/16	1.13/16	3 3/4	1.06	15/16	1 1/8-12	1	1 15/16	33	249.70
PTR-3014	9214	3	14	1 3/8	24 1/4	3/16	3/4-16 SAE	1.015	2.7/16	2.7/16	1.13/16	3 3/16	1.06	15/16	1 1/8-12	1	1 15/16	35	261.13
PTR-3016	10616	3	16	1 3/8	26 1/4	3/16	3/4-16 SAE	1.015	2.7/16	2.7/16	1.13/16	3 3/4	1.06	1 1/4	1 1/8-12	1	1 15/16	29	276.20
PTR-3016A	9216	3	16	1 3/8	31 1/2	3/16	3/4-16 SAE	1.015	2.7/16	2.7/16	1.13/16	9	1.06	15/16	1 1/8-12	1	1 15/16	39	274.49
PTR-3018	9218	3	18	1 3/8	28 1/4	3/16	3/4-16 SAE	1.015	2.7/16	2.7/16	1.13/16	3 3/4	1.06	15/16	1 1/8-12	1	1 15/16	42	284.26
PTR-3020	9220	3	20	1 3/8	30 1/4	3/16	3/4-16 SAE	1.015	2.7/16	2.7/16	1.13/16	3 3/4	1.06	15/16	1 1/8-12	1	1 15/16	45	299.44
PTR-3024	9224	3	24	1 3/8	34 1/4	3/16	3/4-16 SAE	1.015	2.7/16	2.7/16	1.13/16	3 3/4	1.06	15/16	1 1/8-12	1	1 15/16	47	324.62
PTR-3030	9230	3	30	1 3/8	40 1/4	3/16	3/4-16 SAE	1.015	2.7/16	2.7/16	1.13/16	3 3/4	1.06	15/16	1 1/8-12	1	1 15/16	53	369.67
PTR-3036	9236	3	36	1 3/8	46 1/4	3/16	3/4-16 SAE	1.015	2.7/16	2.7/16	1.13/16	3 3/4	1.06	15/16	1 1/8-12	1	1 15/16	61	414.96
PTR-3048	9248	3	48	1 3/8	58 1/4	3/16	3/4-16 SAE	1.015	2.7/16	2.7/16	1.13/16	3 3/4	1.06	15/16	1 1/8-12	1	1 15/16	66	511.56
PTR-3508A	9308A	3 1/2	8	1 3/8	20 1/4	3/16	3/4-16 SAE	1.015	2.3/8	2.7/16	1.13/16	5 3/4	1.06	1 1/4	1 1/8-12	1	1 13/16	35	247.40



TIE-ROD CYLINDERS



THE MAJESTIC AND ROYAL PLATE LINE

2500 PSI (MAJESTIC) AND 3000 PSI (ROYAL) DOUBLE

ACTING TIE ROD CYLINDERS

CYLINDERS

PTR	MFGR NO.	BORE	STROKE	ROD DIA.	RE-TRACT. DIMEN.	A	B/C PORT SIZE	D	E	F	G	H	J	K	M	N	O	SHIP WT.	PRICE		
PTR-3510	9310A	3 1/2	10	1 3/8	20 1/4	3/16	3/4-16 SAE	1.015	2 3/8	2 7/16	1 13/16	3 3/4	1.06	1 1/4	1 1/8-12	1	1 13/16	36	\$259.45		
PTR-3512	9312A	3 1/2	12	1 3/8	22 1/4	3/16	3/4-16 SAE	1.015	2 3/8	2 7/16	1 13/16	3 3/4	1.06	1 1/4	1 1/8-12	1	1 13/16	38	274.38		
PTR-3514	9314A	3 1/2	14	1 3/8	24 1/4	3/16	3/4-16 SAE	1.015	2 3/8	2 7/16	1 13/16	3 3/4	1.06	1 1/4	1 1/8-12	1	1 13/16	41	289.08		
PTR-3516A	9316A	3 1/2	16	1 3/8	31 1/2	3/16	3/4-16 SAE	1.015	2 3/8	2 7/16	1 13/16	9	1.06	1 1/4	1 1/8-12	1	1 13/16	46	306.42		
PTR-3518	9318A	3 1/2	18	1 3/8	28 1/4	3/16	3/4-16 SAE	1.015	2 3/8	2 7/16	1 13/16	3 3/4	1.06	1 1/4	1 1/8-12	1	1 13/16	47	316.89		
PTR-3520	9320A	3 1/2	20	1 3/8	30 1/4	3/16	3/4-16 SAE	1.015	2 3/8	2 7/16	1 13/16	3 3/4	1.06	1 1/4	1 1/8-12	1	1 13/16	49	333.06		
PTR-3524	9324A	3 1/2	24	1 3/8	34 1/4	3/16	3/4-16 SAE	1.015	2 3/8	2 7/16	1 13/16	3 3/4	1.06	1 1/4	1 1/8-12	1	1 13/16	54	365.92		
PTR-3530	9330A	3 1/2	30	1 3/8	40 1/4	3/16	3/4-16 SAE	1.015	2 3/8	2 7/16	1 13/16	3 3/4	1.06	1 1/4	1 1/8-12	1	1 13/16	64	417.13		
PTR-3536	9336A	3 1/2	36	1 3/8	46 1/4	3/16	3/4-16 SAE	1.015	2 3/8	2 7/16	1 13/16	3 3/4	1.06	1 1/4	1 1/8-12	1	1 13/16	66	424.60		
PTR-3548	9348A	3 1/2	48	1 3/8	58 1/4	3/16	3/4-16 SAE	1.015	2 3/8	2 7/16	1 13/16	3 3/4	1.06	1 1/4	1 1/8-12	1	1 13/16	73	580.70		
PTR-4008	9408	4	8	1 3/4	20 1/4	3/16	3/4-16 SAE	1.015	2 5/16	2 7/16	1 7/8	5 1/4	1.06	1 1/4	1 1/2-12	1	1 13/16	45	327.03		
PTR-4008-1.5R	8608	4	8	1 1/2	20 1/4	3/16	3/4-16 SAE	1.015	2 5/16	2 7/16	1 7/8	5 1/4	1.06	1 1/4	1 1/2-12	1	1 13/16	42	287.63		
PTR-4010	9410	4	10	1 3/4	20 1/4	3/16	3/4-16 SAE	1.015	2 5/16	2 7/16	1 7/8	3 1/4	1.06	1 1/4	1 1/2-12	1	1 13/16	48	341.25		
PTR-4012	9412	4	12	1 3/4	22 1/4	3/16	3/4-16 SAE	1.015	2 5/16	2 7/16	1 7/8	3 1/4	1.06	1 1/4	1 1/2-12	1	1 13/16	49	370.39		
PTR-4014	9414	4	14	1 3/4	24 1/4	3/16	3/4-16 SAE	1.015	2 5/16	2 7/16	1 7/8	3 1/4	1.06	1 1/4	1 1/2-12	1	1 13/16	51	376.28		
PTR-4016	108816	4	16	1 3/4	26 1/4	3/16	3/4-16 SAE	1.015	2 5/16	2 7/16	1 7/8	3 1/4	1.06	1 1/4	1 1/2-12	1	1 13/16	48	397.00		
PTR-4016A	9416	4	16	1 3/4	31 1/2	3/16	3/4-16 SAE	1.015	2 5/16	2 7/16	1 7/8	8 1/2	1.06	1 1/4	1 1/2-12	1	1 13/16	61	397.00		
PTR-4018	9418	4	18	1 3/4	28 1/4	3/16	3/4-16 SAE	1.015	2 5/16	2 7/16	1 7/8	3 1/4	1.06	1 1/4	1 1/2-12	1	1 13/16	62	411.35		
PTR-4020	9420	4	20	1 3/4	30 1/4	3/16	3/4-16 SAE	1.015	2 5/16	2 7/16	1 7/8	3 1/4	1.06	1 1/4	1 1/2-12	1	1 13/16	72	428.80		
PTR-4024	9424	4	24	1 3/4	34 1/4	3/16	3/4-16 SAE	1.015	2 5/16	2 7/16	1 7/8	3 1/4	1.06	1 1/4	1 1/2-12	1	1 13/16	74	453.50		
PTR-4030	9430	4	30	1 3/4	40 1/4	3/16	3/4-16 SAE	1.015	2 5/16	2 7/16	1 7/8	3 1/4	1.06	1 1/4	1 1/2-12	1	1 13/16	77	505.89		
PTR-4036	9436	4	36	1 3/4	46 1/4	3/16	3/4-16 SAE	1.015	2 5/16	2 7/16	1 7/8	3 1/4	1.06	1 1/4	1 1/2-12	1	1 13/16	83	558.40		
PTR-4048	9448	4	48	1 3/4	58 1/4	3/16	3/4-16 SAE	1.015	2 5/16	2 7/16	1 7/8	3 1/4	1.06	1 1/4	1 1/2-12	1	1 13/16	109	663.43		
PTR-5008	9508	5	8	2	20 1/4	1/4	7/8-16 SAE	1.265	2 3/4	2 5/8	2	4	1.06	1 1/4	1 1/2-12	1	2 1/2	67	469.27		
PTR-5012	9512	5	12	2	24 1/4	1/4	7/8-16 SAE	1.265	2 3/4	2 5/8	2	4	1.06	1 1/4	1 1/2-12	1	2 1/2	75	510.36		
PTR-5014	9514	5	14	2	26 1/4	1/4	7/8-16 SAE	1.265	2 3/4	2 5/8	2	4	1.06	1 1/4	1 1/2-12	1	2 1/2	80	530.94		
PTR-5016A	9516	5	16	2	31 1/2	1/4	7/8-16 SAE	1.265	2 3/4	2 5/8	2	7 1/4	1.06	1 1/4	1 1/2-12	1	2 1/2	84	558.29		
PTR-5018	9518	5	18	2	28 1/4	1/4	7/8-16 SAE	1.265	2 3/4	2 5/8	2	4	1.06	1 1/4	1 1/2-12	1	2 1/2	90	572.03		
PTR-5020	9520	5	20	2	32 1/4	1/4	7/8-16 SAE	1.265	2 3/4	2 5/8	2	4	1.06	1 1/4	1 1/2-12	1	2 1/2	95	592.61		
PTR-5024	9524	5	24	2	36 1/4	1/4	7/8-16 SAE	1.265	2 3/4	2 5/8	2	4	1.06	1 1/4	1 1/2-12	1	2 1/2	100	620.69		
PTR-5030	9530	5	30	2	42 1/4	1/4	7/8-16 SAE	1.265	2 3/4	2 5/8	2	4	1.06	1 1/4	1 1/2-12	1	2 1/2	108	685.49		
PTR-5036	9536	5	36	2	48 1/4	1/4	7/8-16 SAE	1.265	2 3/4	2 5/8	2	4	1.06	1 1/4	1 1/2-12	1	2 1/2	118	754.12		
PTR-5048	9548	5	48	2	60 1/4	1/4	7/8-16 SAE	1.265	2 3/4	2 5/8	2	4	1.06	1 1/4	1 1/2-12	1	2 1/2	161	907.84		

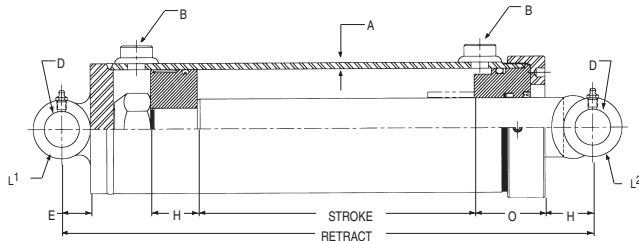


WELDED CYLINDERS



THE GLADIATOR LINE

3000 PSI DOUBLE ACTING CYLINDERS



FEATURES:

- Heavy duty welded construction
- 3000 PSI (2:1 safety factor for buckling on 36" stroke and less. Longer stroke consult factory)
- Steel gland cap retainer with lock screw
- 3/4 NPTF full-flow ports
- Standard color is highway yellow
- High grade gray iron piston & gland
- Precision skived tube for long seal life
- All steel spacer tube for bearing length on 48" or more of stroke
- Ground and polished chrome C-1045 steel piston rod for maximum life
- Heavy duty torqued locknut for piston retainer
- Polyurethane "U" cup and heavy duty wiper in gland. Crown seal with bearing rings on piston

CYLINDERS

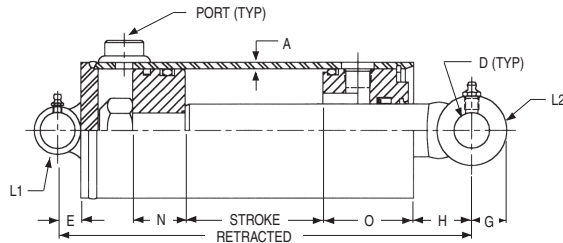
PMW2	MFGR. NO.	BORE	STROKE	ROD DIA.	RE-TRACT. DIMEN.	A	B PORT SIZE	D	E	H	L1	O	L2	SHIP WT.	PRICE		
PMW-5008	21008	5	8	2 1/2	19	1/4	3/4 NPTF	1.515	1 1/4	1 7/8	5 3/4	2 15/16	4	75	\$ 709.82		
PMW-5012	21012	5	12	2 1/2	23	1/4	3/4 NPTF	1.515	1 1/4	1 7/8	5 3/4	2 15/16	4	85	768.36		
PMW-5016	21016	5	16	2 1/2	27	1/4	3/4 NPTF	1.515	1 1/4	1 7/8	5 3/4	2 15/16	4	90	802.54		
PMW-5020	21020	5	20	2 1/2	31	1/4	3/4 NPTF	1.515	1 1/4	1 7/8	5 3/4	2 15/16	4	105	858.45		
PMW-5024	21024	5	24	2 1/2	35	1/4	3/4 NPTF	1.515	1 1/4	1 7/8	5 3/4	2 15/16	4	115	921.92		
PMW-5030	21030	5	30	2 1/2	41	1/4	3/4 NPTF	1.515	1 1/4	1 7/8	5 3/4	2 15/16	4	130	1,008.53		
PMW-5036	21036	5	36	2 1/2	47	1/4	3/4 NPTF	1.515	1 1/4	1 7/8	5 3/4	2 15/16	4	145	1,078.50		
PMW-5048	21048	5	48	2 1/2	61	1/4	3/4 NPTF	1.515	1 1/4	1 7/8	5 3/4	2 15/16	4	180	1,336.50		
PMW-5054	21054	5	54	2 1/2	68	1/4	3/4 NPTF	1.515	1 1/4	1 7/8	5 3/4	2 15/16	4	195	1,421.06		
PMW-5060	21060	5	60	2 1/2	75	1/4	3/4 NPTF	1.515	1 1/4	1 7/8	5 3/4	2 15/16	4	215	1,518.38		
PMW-6008	22008	6	8	3	19	1/4	3/4 NPTF	1.515	1 1/4	2	6 3/4	3 1/8	4	100	884.34		
PMW-6012	22012	6	12	3	23	1/4	3/4 NPTF	1.515	1 1/4	2	6 3/4	3 1/8	4	110	932.76		
PMW-6016	22016	6	16	3	27	1/4	3/4 NPTF	1.515	1 1/4	2	6 3/4	3 1/8	4	125	999.86		
PMW-6024	22024	6	24	3	35	1/4	3/4 NPTF	1.515	1 1/4	2	6 3/4	3 1/8	4	150	1,157.76		
PMW-6030	22030	6	30	3	41	1/4	3/4 NPTF	1.515	1 1/4	2	6 3/4	3 1/8	4	170	1,281.71		
PMW-6036	22036	6	36	3	47	1/4	3/4 NPTF	1.515	1 1/4	2	6 3/4	3 1/8	4	190	1,405.64		
PMW-6048	22048	6	48	3	61	1/4	3/4 NPTF	1.515	1 1/4	2	6 3/4	3 1/8	4	240	1,803.12		
PMW-6054	22054	6	54	3	68	1/4	3/4 NPTF	1.515	1 1/4	2	6 3/4	3 1/8	4	265	1,956.71		
PMW-6060	22060	6	60	3	75	1/4	3/4 NPTF	1.515	1 1/4	2	6 3/4	3 1/8	4	290	2,020.65		



WELDED CYLINDERS



THE ROYAL LINE 2500 PSI DOUBLE ACTING CYLINDERS



FEATURES:

- Honed tubing
- Heavy duty welded construction
- Chromed, ground & polished piston rod
- Cast iron piston & gland
- Pin eye mounting on both ends
- Quad ring/backup washer & urethane wiper in gland
- O-ring/backup washers & cast iron ring for piston seals
- Truarc type gland retainer
- Standard color is red

PMW	MFGR. NO.	BORE	STROKE	ROD DIA.	RE-TRACT. DIMEN.	PORT SIZE	A	D	E	G	H	L1	L2	N	O	SHIP WT.	LIST PRICE	PRICE 1-9 PCS	PRICE 10+ PCS
PMW-2508	5408	2 1/2	8	1 3/8	16	3/8 NPTF	3/16	.760	9/16	3/4	2 9/16	3	1 3/8	1 1/4	2 1/2	17	\$ 253.91	\$ 165.04	\$ 152.34
PMW-2512	5412	2 1/2	12	1 3/8	20	3/8 NPTF	3/16	.760	9/16	3/4	2 9/16	3	1 3/8	1 1/4	2 1/2	20	266.78	173.41	160.07
PMW-2516	5416	2 1/2	16	1 3/8	24	3/8 NPTF	3/16	.760	9/16	3/4	2 9/16	3	1 3/8	1 1/4	2 1/2	23	280.65	182.42	168.39
PMW-2520	5420	2 1/2	20	1 3/8	28	3/8 NPTF	3/16	.760	9/16	3/4	2 9/16	3	1 3/8	1 1/4	2 1/2	27	279.58	181.72	167.75
PMW-2524	5424	2 1/2	24	1 3/8	32	3/8 NPTF	3/16	.760	9/16	3/4	2 9/16	3	1 3/8	1 1/4	2 1/2	30	306.07	198.95	183.64
PMW-2530	5430	2 1/2	30	1 3/8	38	3/8 NPTF	3/16	.760	9/16	3/4	2 9/16	3	1 3/8	1 1/4	2 1/2	35	325.21	211.39	195.13
PMW-2532	5432	2 1/2	32	1 3/8	40	3/8 NPTF	3/16	.760	9/16	3/4	2 9/16	3	1 3/8	1 1/4	2 1/2	41	336.19	218.52	201.71
PMW-2536	5436	2 1/2	36	1 3/8	44	3/8 NPTF	3/16	.760	9/16	3/4	2 9/16	3	1 3/8	1 1/4	2 1/2	44	350.27	227.67	210.16
PMW-2542	5442	2 1/2	42	1 3/8	50	3/8 NPTF	3/16	.760	9/16	3/4	2 9/16	3	1 3/8	1 1/4	2 1/2	47	404.36	262.83	242.62
PMW-3008	8308	3	8	1 1/2	16	1/2 NPTF	3/16	1.015	11/16	1	2 5/16	3 1/2	1 1/2	1 1/4	2 5/8	22	282.92	183.90	169.75
PMW-3012	8312	3	12	1 1/2	20	1/2 NPTF	3/16	1.015	11/16	1	2 5/16	3 1/2	1 1/2	1 1/4	2 5/8	26	306.66	199.33	184.00
PMW-3016	8316	3	16	1 1/2	24	1/2 NPTF	3/16	1.015	11/16	1	2 5/16	3 1/2	1 1/2	1 1/4	2 5/8	31	333.64	216.87	200.19
PMW-3020	8320	3	20	1 1/2	28	1/2 NPTF	3/16	1.015	11/16	1	2 5/16	3 1/2	1 1/2	1 1/4	2 5/8	35	357.25	232.21	214.35
PMW-3024	8324	3	24	1 1/2	32	1/2 NPTF	3/16	1.015	11/16	1	2 5/16	3 1/2	1 1/2	1 1/4	2 5/8	41	380.86	247.56	228.52
PMW-3030	8330	3	30	1 1/2	38	1/2 NPTF	3/16	1.015	11/16	1	2 5/16	3 1/2	1 1/2	1 1/4	2 5/8	46	415.68	270.19	249.41
PMW-3032	8332	3	32	1 1/2	40	1/2 NPTF	3/16	1.015	11/16	1	2 5/16	3 1/2	1 1/2	1 1/4	2 5/8	48	426.87	277.47	256.12
PMW-3036	8336	3	36	1 1/2	44	1/2 NPTF	3/16	1.015	11/16	1	2 5/16	3 1/2	1 1/2	1 1/4	2 5/8	52	450.13	292.59	270.08
PMW-3040	8340	3	40	1 1/2	48	1/2 NPTF	3/16	1.015	11/16	1	2 5/16	3 1/2	1 1/2	1 1/4	2 5/8	56	461.80	300.17	277.08
PMW-3042	8342	3	42	1 1/2	50	1/2 NPTF	3/16	1.015	11/16	1	2 5/16	3 1/2	1 1/2	1 1/4	2 5/8	59	473.26	307.62	283.95
PMW-3048	8348	3	48	1 1/2	56	1/2 NPTF	3/16	1.015	11/16	1	2 5/16	3 1/2	1 1/2	1 1/4	2 5/8	65	516.97	336.03	310.18
PMW-3508	5508	3 1/2	8	1 1/2	16	1/2 NPTF	3/16	1.015	11/16	1	1 11/16	4	1 1/2	1 1/2	2 5/8	26	338.11	219.77	202.87
PMW-3512	5512	3 1/2	12	1 1/2	20	1/2 NPTF	3/16	1.015	11/16	1	1 11/16	4	1 1/2	1 1/2	2 5/8	29	361.72	235.12	217.03
PMW-3516	5516	3 1/2	16	1 1/2	24	1/2 NPTF	3/16	1.015	11/16	1	1 11/16	4	1 1/2	1 1/2	2 5/8	34	386.88	251.47	232.13
PMW-3520	5520	3 1/2	20	1 1/2	28	1/2 NPTF	3/16	1.015	11/16	1	1 11/16	4	1 1/2	1 1/2	2 5/8	38	411.21	267.29	246.73
PMW-3524	5524	3 1/2	24	1 1/2	32	1/2 NPTF	3/16	1.015	11/16	1	1 11/16	4	1 1/2	1 1/2	2 5/8	44	421.09	273.71	252.65
PMW-3530	5530	3 1/2	30	1 1/2	38	1/2 NPTF	3/16	1.015	11/16	1	1 11/16	4	1 1/2	1 1/2	2 5/8	48	456.85	296.95	274.11
PMW-3532	5532	3 1/2	32	1 1/2	40	1/2 NPTF	3/16	1.015	11/16	1	1 11/16	4	1 1/2	1 1/2	2 5/8	52	468.55	304.56	281.13
PMW-3536	5536	3 1/2	36	1 1/2	44	1/2 NPTF	3/16	1.015	11/16	1	1 11/16	4	1 1/2	1 1/2	2 5/8	56	451.44	293.44	270.87
PMW-3540	5540	3 1/2	40	1 1/2	48	1/2 NPTF	3/16	1.015	11/16	1	1 11/16	4	1 1/2	1 1/2	2 5/8	60	515.66	335.18	309.39
PMW-3542	5542	3 1/2	42	1 1/2	50	1/2 NPTF	3/16	1.015	11/16	1	1 11/16	4	1 1/2	1 1/2	2 5/8	64	527.46	342.85	316.48
PMW-3548	5548	3 1/2	48	1 1/2	56	1/2 NPTF	3/16	1.015	11/16	1	1 11/16	4	1 1/2	1 1/2	2 5/8	70	637.79	414.56	382.67
PMW-4008	5608	4	8	2	17	1/2 NPTF	3/16	1.265	15/16	1 1/4	2	4 1/2	2	1 5/16	2 7/8	35	425.91	276.84	255.54
PMW-4012	5612	4	12	2	21	1/2 NPTF	3/16	1.265	15/16	1 1/4	2	4 1/2	2	1 5/16	2 7/8	41	435.89	283.33	261.54
PMW-4016	5616	4	16	2	25	1/2 NPTF	3/16	1.265	15/16	1 1/4	2	4 1/2	2	1 5/16	2 7/8	48	460.12	299.08	276.07
PMW-4020	5620	4	20	2	29	1/2 NPTF	3/16	1.265	15/16	1 1/4	2	4 1/2	2	1 5/16	2 7/8	56	\$ 483.96	\$ 314.58	\$ 290.38



WELDED CYLINDERS



THE ROYAL LINE
2500 PSI DOUBLE ACTING CYLINDERS

PMW	MFGR. NO.	BORE	STROKE	ROD DIA.	RE-TRACT. DIMEN.	PORT SIZE	A	D	E	G	H	L1	L2	N	O	SHIP WT.	LIST PRICE	PRICE 1-9 PCS	PRICE 10+ PCS
PMW-4024	5624	4	24	2	33	1/2 NPTF	3/16	1.265	15/16	1 1/4	2	4 1/2	2	1 5/16	2 7/8	62	\$ 503.96	\$ 327.57	\$ 302.38
PMW-4030	5630	4	30	2	39	1/2 NPTF	3/16	1.265	15/16	1 1/4	2	4 1/2	2	1 5/16	2 7/8	72	541.78	352.16	325.07
PMW-4032	5632	4	32	2	41	1/2 NPTF	3/16	1.265	15/16	1 1/4	2	4 1/2	2	1 5/16	2 7/8	74	565.04	367.28	339.02
PMW-4036	5636	4	36	2	45	1/2 NPTF	3/16	1.265	15/16	1 1/4	2	4 1/2	2	1 5/16	2 7/8	80	582.84	378.85	349.70
PMW-4040	5640	4	40	2	49	1/2 NPTF	3/16	1.265	15/16	1 1/4	2	4 1/2	2	1 5/16	2 7/8	85	623.93	405.55	374.36
PMW-4042	5642	4	42	2	51	1/2 NPTF	3/16	1.265	15/16	1 1/4	2	4 1/2	2	1 5/16	2 7/8	92	634.90	412.69	380.94
PMW-4048	5648	4	48	2	57	1/2 NPTF	3/16	1.265	15/16	1 1/4	2	4 1/2	2	1 5/16	2 7/8	100	665.60	432.64	399.36
PMW-4060	5660	4	60	2	69	1/2 NPTF	3/16	1.265	15/16	1 1/4	2	4 1/2	2	1 5/16	2 7/8	120	777.00	505.05	466.20

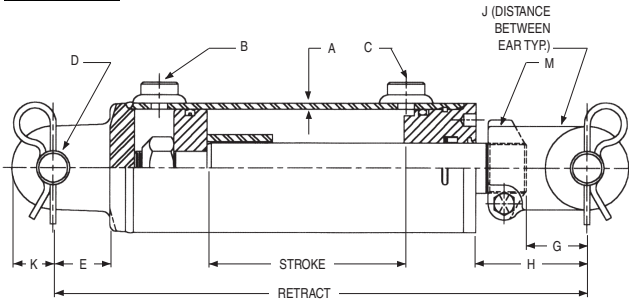
CYLINDERS



WELDED CYLINDERS



THE SWORD LINE 3000 PSI DOUBLE ACTING CYLINDERS



FEATURES:

- Skived, honed tubing
- Heavy duty welded construction
- Chromed, ground & polished piston rod will operate at full pressure through 16" stroke
- Cast iron piston, cast steel butt, gland & clevis
- Carboxylated nitrile u-cup & urethane wiper in gland, crown seal on piston
- Square ring gland retainer provides positive lock
- Pins & clips included
- Standard color is white
- Stroke control may be installed on 8" strokes

CYLINDERS

PCW	MFGR. NO.	BORE	STROKE	ROD DIA.	RE-TRACT. DIMEN.	A	B/C PORT SIZE	D	E	G	H	J	K	M	SHIP WT.	LIST PRICE	PRICE 1-9 PCS	PRICE 10+ PCS
PCW-2008	42008	2	8	1 1/8	20 1/4	3/16	1/2 NPTF	1.015	1 3/4	1 13/16	5 9/16	1 1/16	1	1 1/8 12	10	\$ 280.27	\$ 182.18	\$ 168.16
PCW-2010	42010	2	10	1 1/8	20 1/4	3/16	1/2 NPTF	1.015	1 3/4	1 13/16	3 9/16	1 1/16	1	1 1/8 12	20	288.49	187.52	173.09
PCW-2012	42012	2	12	1 1/8	22 1/4	3/16	1/2 NPTF	1.015	1 3/4	1 13/16	3 9/16	1 1/16	1	1 1/8 12	22	296.30	192.60	177.78
PCW-2016A	42016	2	16	1 1/8	31 1/2	3/16	1/2 NPTF	1.015	1 3/4	1 13/16	8 13/16	1 1/16	1	1 1/8 12	25	321.25	208.81	192.75
PCW-2020	42020	2	20	1 1/8	30 1/4	3/16	1/2 NPTF	1.015	1 3/4	1 13/16	3 9/16	1 1/16	1	1 1/8 12	28	335.95	218.36	201.57
PCW-2024	42024	2	24	1 1/8	34 1/4	3/16	1/2 NPTF	1.015	1 3/4	1 13/16	3 9/16	1 1/16	1	1 1/8 12	31	306.18	199.02	183.71
PCW-2508	42508	2 1/2	8	1 1/4	20 1/4	3/16	1/2 NPTF	1.015	1 3/4	1 13/16	5 9/16	1 1/16	1	1 1/8 12	21	294.97	191.73	176.98
PCW-2510	42510	2 1/2	10	1 1/4	20 1/4	3/16	1/2 NPTF	1.015	1 3/4	1 13/16	3 9/16	1 1/16	1	1 1/8 12	22	303.40	197.21	182.04
PCW-2512	42512	2 1/2	12	1 1/4	22 1/4	3/16	1/2 NPTF	1.015	1 3/4	1 13/16	3 9/16	1 1/16	1	1 1/8 12	23	312.31	203.00	187.39
PCW-2516	42516	2 1/2	16	1 1/4	31 1/2	3/16	1/2 NPTF	1.015	1 3/4	1 13/16	8 13/16	1 1/16	1	1 1/8 12	27	338.35	219.93	203.01
PCW-2520	42520	2 1/2	20	1 1/4	30 1/4	3/16	1/2 NPTF	1.015	1 3/4	1 13/16	3 9/16	1 1/16	1	1 1/8 12	31	356.29	231.59	213.77
PCW-2524	42524	2 1/2	24	1 1/4	34 1/4	3/16	1/2 NPTF	1.015	1 3/4	1 13/16	3 9/16	1 1/16	1	1 1/8 12	35	374.36	243.33	224.61
PCW-3008	43008	3	8	1 3/8	20 1/4	3/16	1/2 NPTF	1.015	1 3/4	1 13/16	5 9/16	1 1/16	1 1/8	1 1/8 12	23	317.02	206.06	190.21
PCW-3010	43010	3	10	1 3/8	20 1/4	3/16	1/2 NPTF	1.015	1 3/4	1 13/16	3 9/16	1 1/16	1 1/8	1 1/8 12	26	333.99	217.09	200.40
PCW-3012	43012	3	12	1 3/8	22 1/4	3/16	1/2 NPTF	1.015	1 3/4	1 13/16	3 9/16	1 1/16	1 1/8	1 1/8 12	28	344.00	223.60	206.40
PCW-3016A	43016	3	16	1 3/8	31 1/2	3/16	1/2 NPTF	1.015	1 3/4	1 13/16	8 13/16	1 1/16	1 1/8	1 1/8 12	33	363.41	236.22	218.04
PCW-3020	43020	3	20	1 3/8	30 1/4	3/16	1/2 NPTF	1.015	1 3/4	1 13/16	3 9/16	1 1/16	1 1/8	1 1/8 12	39	386.88	251.47	232.13
PCW-3024	43024	3	24	1 3/8	34 1/4	3/16	1/2 NPTF	1.015	1 3/4	1 13/16	3 9/16	1 1/16	1 1/8	1 1/8 12	43	430.86	280.06	258.52
PCW-3508	43508	3 1/2	8	1 1/2	20 1/4	3/16	1/2 NPTF	1.015	1 3/4	1 13/16	5 3/8	1 1/16	1 1/4	1 1/2 12	29	344.35	223.83	206.61
PCW-3510	43510	3 1/2	10	1 1/2	20 1/4	3/16	1/2 NPTF	1.015	1 3/4	1 13/16	3 3/8	1 1/16	1 1/4	1 1/2 12	31	359.29	233.54	215.57
PCW-3512	43512	3 1/2	12	1 1/2	22 1/4	3/16	1/2 NPTF	1.015	1 3/4	1 13/16	3 3/8	1 1/16	1 1/4	1 1/2 12	33	374.11	243.17	224.47
PCW-3516A	43516	3 1/2	16	1 1/2	31 1/2	3/16	1/2 NPTF	1.015	1 3/4	1 13/16	8 3/8	1 1/16	1 1/4	1 1/2 12	38	415.42	270.02	249.25
PCW-3520	43520	3 1/2	20	1 1/2	30 1/4	3/16	1/2 NPTF	1.015	1 3/4	1 13/16	3 3/8	1 1/16	1 1/4	1 1/2 12	43	444.35	288.83	266.61
PCW-3524	43524	3 1/2	24	1 1/2	34 1/4	3/16	1/2 NPTF	1.015	1 3/4	1 13/16	3 3/8	1 1/16	1 1/4	1 1/2 12	48	476.98	310.04	286.19
PCW-4008	44008	4	8	1 3/4	20 1/4	3/16	1/2 NPTF	1.015	1 3/4	1 13/16	5 3/8	1 1/8	1 1/4	1 1/2 12	40	409.05	265.88	245.43
PCW-4010	44010	4	10	1 3/4	20 1/4	3/16	1/2 NPTF	1.015	1 3/4	1 13/16	3 3/8	1 1/8	1 1/4	1 1/2 12	43	426.52	277.24	255.91
PCW-4012	44012	4	12	1 3/4	22 1/4	3/16	1/2 NPTF	1.015	1 3/4	1 13/16	3 3/8	1 1/8	1 1/4	1 1/2 12	45	443.73	288.43	266.24
PCW-4016A	44016	4	16	1 3/4	31 1/2	3/16	1/2 NPTF	1.015	1 3/4	1 13/16	8 3/8	1 1/8	1 1/4	1 1/2 12	54	491.81	319.67	295.08
PCW-4020	44020	4	20	1 3/4	30 1/4	3/16	1/2 NPTF	1.015	1 3/4	1 13/16	3 3/8	1 1/8	1 1/4	1 1/2 12	58	527.22	342.69	316.33
PCW-4024	44024	4	24	1 3/4	34 1/4	3/16	1/2 NPTF	1.015	1 3/4	1 13/16	3 3/8	1 1/8	1 1/4	1 1/2 12	60	562.74	365.78	337.64
PCW-4030	44030	4	30	1 3/4	40 1/4	3/16	1/2 NPTF	1.015	1 3/4	1 13/16	3 3/8	1 1/8	1 1/4	1 1/2 12	65	616.22	400.54	369.73



SINGLE ACTING TELESCOPIC CYLINDERS

Commercial Intertech

These cylinders are available from Custom Hoists, Commercial, Hyco and SHC. Request the manufacturer you want.

COMMERCIAL FEATURES

- Longer sleeve overlap for improved stability and higher column loading.
- Heavy walled tubing in the first stage offers up to 27% more cross-sectional area providing up to 76% greater tube burst strength than our competition.
- Beveled mating surfaces of the overlap collar and stop ring for greater impact resistance during dumping operations.
- Snap-on, glass-filled bearings that absorb contaminants without damaging the cylinder walls.
- Threaded stop rings for easier servicing and more reliable stopping action.
- External packing nuts to give added support to the tube and make servicing easier.
- Wave springs and chevron packing for positive, self-compensating seals.
- Hytrel rod wipers resist high temperatures without extruding.
- Cast steel pin-eye and rod-end mountings give dependable strength.

MANUFACTURERS SERVICE MANUALS ARE AVAILABLE. CALL FOR DETAILS.

DOUBLE ACTING CYLINDERS:

- Operating pressure up to 2000 psi.
- Main cylinder outside diameter from 3-3/4" to 10-13/16".
- Lifting capacity to 153,180 lbs.
- Chrome-plated sleeves are available on special order.
- Pin-eye and trunion mountings are standard. If other types are required, dimensions must be specified.

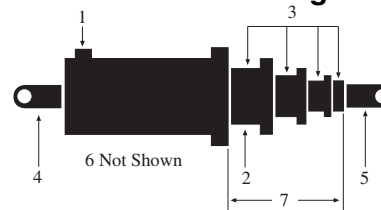
SINGLE ACTING CYLINDERS:

- Operating pressure up to 2000 psi.
- Main cylinder outside diameter from 3-3/4" to 11-1/8".
- All cylinders have NPT ports, unless otherwise specified.
- Lifting capacity to 138,060 lbs.
- Chrome-plated sleeves and plungers are available on special order.
- Pin-eye and trunion mountings are standard. If other types are required, dimensions must be specified.

S.A. Cylinder Information

Sleeve O.D. in inches	Effective Area in sq. inches	Load Capacity lbs. at 2000 p.s.i.	Displacement per in. of stroke in gallons
2.75	5.94	11,880	.026
3.75	11.04	22,080	.048
4.75	17.72	35,440	.077
5.75	25.96	51,920	.112
6.75	35.78	71,560	.155
7.905	48.70	97,400	.210
9.375	69.03	138,060	.299

Model Number Coding



Model Number S84DC-40-161

1. S = Single-acting Type Cylinder
- SD = Double-acting telescopic type
2. 8 = 7-7/8" nominal diameter of largest sleeve
3. 4 = 4 stages or sleeves
4. D = Type of mounting on base end
5. C = Type of mounting on rod end
6. -40 = Modification or design variation
7. 161 = Length of stroke (161")

D.A. Cylinder Information

Sleeve or plunger O.D. (inches)	Bore of Main or Sleeve (inches)	Effective Area extended (sq. inches)	Effective Area retracted (sq. inches)	Load Capacity at 2000 p.s.i. extended (pounds)	Load Capacity at 2000 p.s.i. retracted (pounds)	Displacement per in. of stroke extended (gallons)	Displacement per in. of stroke retracted (gallons)
2.75	3.25	8.295	2.355	16,590	4,710	.036	.010
3.75	4.25	14.186	3.142	28,372	6,284	.061	.014
4.75	5.25	21.648	3.927	43,296	7,854	.094	.017
5.75	6.25	30.680	4.713	61,360	9,426	.133	.020
6.75	7.25	41.282	5.497	82,564	10,994	.179	.024
7.905	8.437	55.680	6.973	111,360	13,946	.242	.030
9.375	9.143	76.590	7.560	153,180	15,120	.331	.038



SINGLE ACTING TELESCOPIC CYLINDERS



These cylinders are available from Custom Hoists, Commercial, Hyco and SHC. Request the manufacturer you want.



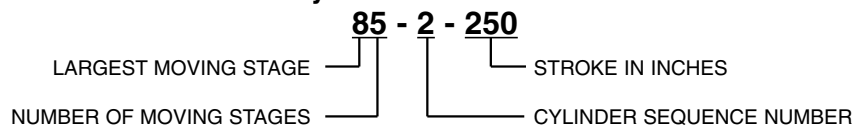
- Features**
- Plunger diameters: 2" thru 9-3/4"
 - Strokes up to 400"
 - One thru six moving stages available
 - Maximum pressure to 2,500 PSI
 - High-quality V-packing to seal high and low pressures
 - Externally threaded head nuts for extra strength, easy seal adjustment
 - Special plunger stops assure full shoulder stop
 - Easy-access bleeder screw, manual or automatic
 - High quality glass-filled nylon or optional bronze bearing rings
 - Dual lip wiper to prevent contamination
 - Wide range of cylinder mountings, including trunions
 - Maximum overlap for stability
 - Chromed plungers available

MANUFACTURERS SERVICE MANUALS ARE AVAILABLE.
CALL FOR DETAILS.

Individual Plunger Lifting Capacities for Single-Acting Telescopic Cylinders

Plunger Dia. (In.)	Cross Section Area (Sq. In.)	Specific Operating Pressures			
		1500 PSI (LBS)	1800 PSI (LBS)	2000 PSI (LBS)	2500 PSI (LBS)
2	3.14	4,710	5,672	6,280	7,850
3	7.06	10,590	12,708	14,120	17,650
4	12.56	18,840	22,608	25,120	31,400
5	19.63	29,445	35,334	39,260	49,075
6	28.27	42,405	50,886	56,540	70,675
7	38.48	57,720	69,264	76,960	96,200
8	50.26	75,390	90,468	100,520	125,650
8-1/4	53.50	80,250	96,300	107,000	133,750
9-1/8	65.40	98,100	117,720	130,800	163,500
9-3/4	74.50	111,750	134,100	149,000	186,250

Cylinder Identification



CYLINDERS



SINGLE ACTING TELESCOPIC CYLINDERS

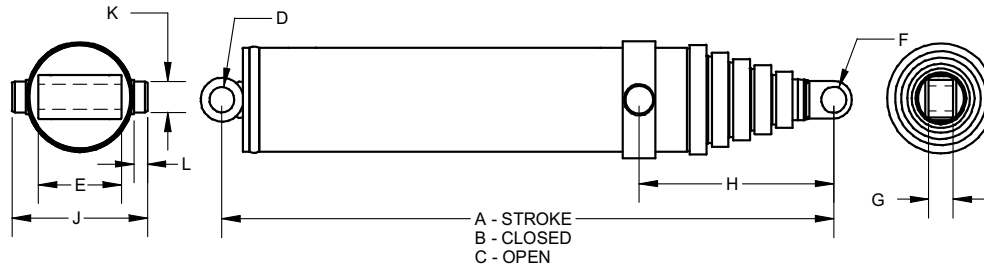
SOUTHERN HYDRAULIC CYLINDER, INC.

These cylinders are available from Custom Hoists, Commercial, Hyco and SHC. Request the manufacturer you want.

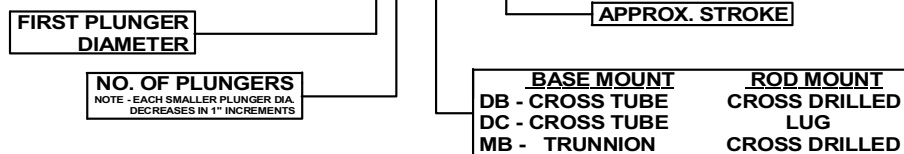
STANDARD SINGLE ACTING TELESCOPIC CYLINDER SPECIFICATIONS

Model Number	Stroke (A)	Closed (B)	Open (C)	Dia. Body	Stage Dia.			(D)	(E)	(F)	(G)	(H)	(J)	(K)	(L)	Ret Vol (Gal)	Ext Vol (Gal)	Dry Wt. (Lbs)
					1	2	3	1	2	3	1	2	3	1	2	3	1	2
SHC-M32DB-43	40.38	29.69	70.07	4.00	3	2	-	1.50	4.00	1.25	1.88	-	-	-	-	.58	1.46	60
SHC-M32DB-50	46.67	32.84	79.51	4.00	3	2	-	1.50	4.00	1.25	1.88	-	-	-	-	.66	1.68	66
SHC-M42DB-43	39.50	30.19	69.69	5.00	4	3	-	1.50	5.00	1.50	2.75	-	-	-	-	1.06	2.72	86
SHC-M42DB-50	47.25	33.69	80.94	5.00	4	3	-	1.50	5.00	1.50	2.75	-	-	-	-	1.23	3.23	95
SHC-M42MB-50	51.25	35.07	86.32	5.00	4	3	-	-	-	1.50	2.75	8.50	8.81	1.75	.88	1.33	3.50	97
SHC-M42DB-60	57.88	39.07	96.95	5.00	4	3	-	1.50	5.00	1.50	2.75	-	-	-	-	1.48	3.93	109
SHC-M42MB-65	65.00	42.07	107.07	5.00	4	3	-	-	-	1.50	2.75	8.50	8.81	1.75	.88	1.66	4.41	115
SHC-M43MB-74	73.88	34.63	108.51	5.00	4	3	2	-	-	1.25	1.88	8.50	8.81	1.75	.88	1.07	3.45	106
SHC-M43DB-75	67.34	33.62	100.96	5.00	4	3	2	1.50	5.00	1.25	1.88	-	-	-	-	.98	3.15	105
SHC-M43MB-75	68.25	32.75	101.00	5.00	4	3	2	-	-	1.25	1.88	8.50	8.81	1.75	.88	.99	3.19	100
SHC-M43DB-98	89.83	41.13	130.96	5.00	4	3	2	1.50	5.00	1.25	1.88	-	-	-	-	1.29	4.19	124
SHC-M43MB-98	96.42	42.19	138.61	5.00	4	3	2	-	-	1.25	2.00	8.69	8.81	1.75	.88	1.37	4.50	128
SHC-M53DB-60	57.11	29.81	86.92	6.00	5	4	3	1.50	6.25	1.50	2.75	-	-	-	-	1.39	4.56	122
SHC-M53DC-72	72.00	35.13	107.13	6.00	5	4	3	2.00	7.00	1.69	1.63	-	-	-	-	1.72	5.73	142
SHC-M53DB-74	69.14	33.82	102.96	6.00	5	4	3	1.50	6.25	1.50	2.75	-	-	-	-	1.65	5.51	137
SHC-M53MB-74	74.00	34.63	108.63	6.00	5	4	3	-	-	1.50	2.75	8.50	8.81	1.75	.88	1.75	5.89	141
SHC-M53DB-90	86.55	39.63	126.18	6.00	5	4	3	1.50	6.25	1.50	2.75	-	-	-	-	2.02	6.87	159
SHC-M53MB-90	86.06	38.63	124.69	6.00	5	4	3	-	-	1.50	2.75	8.50	8.81	1.75	.88	2.01	6.83	156

ALL ITEMS LISTED ARE STOCK ITEMS. ALL LISTED ITEMS ARE MARION STYLE CYLINDERS.
PORTS 1/2"-14 NPT ON SERIES 32, 42, 43, & 53 (SHC-M53DC-72, SHC-M53DC-84, & SHC-M53DC-84A USE 3/4"-14 NPT)
OTHER SIZES AND OPTIONS ARE AVAILABLE.



CYLINDER IDENTIFICATION SHC - M 53 DB - 75



SINGLE ACTING EXTEND LOAD CAPACITY

LOAD CAPACITY : LBS @ PSI

*ALL DIMENSIONS AND CALCULATIONS NOMINAL

PLUNGER DIA.	1500 PSI	2000 PSI	2500 PSI
2	4,700	6,280	7,850
3	10,600	14,130	17,670
4	18,850	25,130	31,410
5	29,450	39,270	49,080
6	42,410	56,540	70,680
7	57,720	76,960	96,210
8.25	80,180	106,910	133,640



SINGLE ACTING TELESCOPIC CYLINDERS



These cylinders are available from Custom Hoists, Commercial, Hyco and SHC. Request the manufacturer you want.



- Features**
- Plunger diameters: 2" thru 9-3/4"
 - Strokes up to 400"
 - One thru six moving stages available
 - Maximum pressure to 2,500 PSI
 - High-quality V-packing to seal high and low pressures
 - Externally threaded head nuts for extra strength, easy seal adjustment
 - Special plunger stops assure full shoulder stop
 - Easy-access bleeder screw, manual or automatic
 - High quality glass-filled nylon or optional bronze bearing rings
 - Dual lip wiper to prevent contamination
 - Wide range of cylinder mountings, including trunions
 - Maximum overlap for stability
 - Chromed plungers available

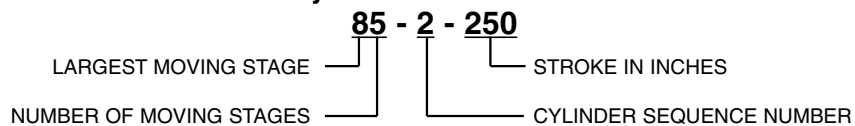
CYLINDERS

**MANUFACTURERS SERVICE MANUALS ARE AVAILABLE.
CALL FOR DETAILS.**

Individual Plunger Lifting Capacities for Single-Acting Telescopic Cylinders

Plunger Dia. (In.)	Cross Section Area (Sq. In.)	Specific Operating Pressures			
		1500 PSI (LBS)	1800 PSI (LBS)	2000 PSI (LBS)	2500 PSI (LBS)
2	3.14	4,710	5,672	6,280	7,850
3	7.06	10,590	12,708	14,120	17,650
4	12.56	18,840	22,608	25,120	31,400
5	19.63	29,445	35,334	39,260	49,075
6	28.27	42,405	50,886	56,540	70,675
7	38.48	57,720	69,264	76,960	96,200
8	50.26	75,390	90,468	100,520	125,650
8-1/4	53.50	80,250	96,300	107,000	133,750
9-1/8	65.40	98,100	117,720	130,800	163,500
9-3/4	74.50	111,750	134,100	149,000	186,250

Cylinder Identification





SINGLE ACTING TELESCOPIC CYLINDERS


Commercial Intertech

These cylinders are available from Custom Hoists, Commercial, Hyco and SHC. Request the manufacturer you want.

COMMERCIAL FEATURES

- Longer sleeve overlap for improved stability and higher column loading.
- Heavy walled tubing in the first stage offers up to 27% more cross-sectional area providing up to 76% greater tube burst strength than our competition.
- Beveled mating surfaces of the overlap collar and stop ring for greater impact resistance during dumping operations.
- Snap-on, glass-filled bearings that absorb contaminants without damaging the cylinder walls.
- Threaded stop rings for easier servicing and more reliable stopping action.
- External packing nuts to give added support to the tube and make servicing easier.
- Wave springs and chevron packing for positive, self-compensating seals.
- Hytrel rod wipers resist high temperatures without extruding.
- Cast steel pin-eye and rod-end mountings give dependable strength.

MANUFACTURERS SERVICE MANUALS ARE AVAILABLE. CALL FOR DETAILS.

DOUBLE ACTING CYLINDERS:

- Operating pressure up to 2000 psi.
- Main cylinder outside diameter from 3-3/4" to 10-13/16".
- Lifting capacity to 153,180 lbs.
- Chrome-plated sleeves are available on special order.
- Pin-eye and trunion mountings are standard. If other types are required, dimensions must be specified.

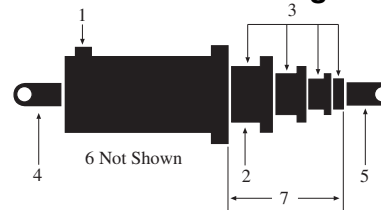
SINGLE ACTING CYLINDERS:

- Operating pressure up to 2000 psi.
- Main cylinder outside diameter from 3-3/4" to 11-1/8".
- All cylinders have NPT ports, unless otherwise specified.
- Lifting capacity to 138,060 lbs.
- Chrome-plated sleeves and plungers are available on special order.
- Pin-eye and trunion mountings are standard. If other types are required, dimensions must be specified.

S.A. Cylinder Information

Sleeve O.D. in inches	Effective Area in sq. inches	Load Capacity lbs. at 2000 p.s.i.	Displacement per in. of stroke in gallons
2.75	5.94	11,880	.026
3.75	11.04	22,080	.048
4.75	17.72	35,440	.077
5.75	25.96	51,920	.112
6.75	35.78	71,560	.155
7.905	48.70	97,400	.210
9.375	69.03	138,060	.299

Model Number Coding



Model Number S84DC-40-161

1. S = Single-acting Type Cylinder
- SD = Double-acting telescopic type
2. 8 = 7-7/8" nominal diameter of largest sleeve
3. 4 = 4 stages or sleeves
4. D = Type of mounting on base end
5. C = Type of mounting on rod end
6. -40 = Modification or design variation
7. 161 = Length of stroke (161")

D.A. Cylinder Information

Sleeve or plunger O.D. (inches)	Bore of Main or Sleeve (inches)	Effective Area extended (sq. inches)	Effective Area retracted (sq. inches)	Load Capacity at 2000 p.s.i. extended (pounds)	Load Capacity at 2000 p.s.i. retracted (pounds)	Displacement per in. of stroke extended (gallons)	Displacement per in. of stroke retracted (gallons)
2.75	3.25	8.295	2.355	16,590	4,710	.036	.010
3.75	4.25	14.186	3.142	28,372	6,284	.061	.014
4.75	5.25	21.648	3.927	43,296	7,854	.094	.017
5.75	6.25	30.680	4.713	61,360	9,426	.133	.020
6.75	7.25	41.282	5.497	82,564	10,994	.179	.024
7.905	8.437	55.680	6.973	111,360	13,946	.242	.030
9.375	9.143	76.590	7.560	153,180	15,120	.331	.038



SINGLE ACTING TELESCOPIC CYLINDERS



These cylinders are available from Custom Hoists, Commercial, Hycot and SHC. Request the manufacturer you want.



Fluid Capacity: Volume To Fully Extend			
Plunger Dia. (Inches)	Effective Area (Sq. Inches)	Load Capacity (Lbs. @ 2000 PSI)	Displacement (Gal./in. of Stroke)
3	7.07	14,140	.031
4	12.56	25,120	.054
5	19.63	39,260	.085
6	28.27	56,540	.122
7	38.48	76,960	.166
8.12	51.78	103,560	.224
8.25	53.46	106,920	.231
9.38	69.10	138,200	.299

Follow example to determine displacement of the complete cylinder **Example:** Model 824-200
 8.12 in. plunger .224
 7 in. plunger .166
 6 in. plunger .122
 5 in. plunger .085
 .597
 $.597 \times 200 = 29.8$ Gallons to fully extend
 4

Features

GENERAL DATA
 Operating pressures to 2000 psi. Plunger diameters range from 2" to 9.375". Lifting capacities to 138,200 lbs. Pin-eye mountings standard—trunion type available. Chrome-plated plungers available.

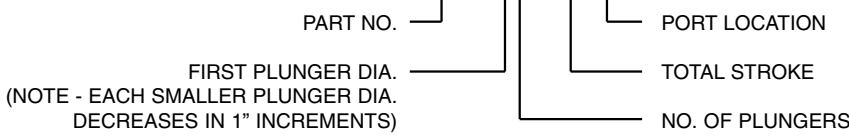
AUTOMATIC AIR BLEEDERS
 Every standard Hycot single-acting telescopic cylinder comes equipped with an automatic air bleeder. This completely eliminates time-consuming and potentially hazardous manual air bleeding operation.

GUIDE RINGS & RETAINING RINGS
 Hycot® features replaceable plunger guide rings, designed and balanced to be well lubricated and made of specially compounded material for long wearing performance. The retainer rings work in conjunction with the piston design to be positively locked into stop position grooves when the cylinder is fully extended.

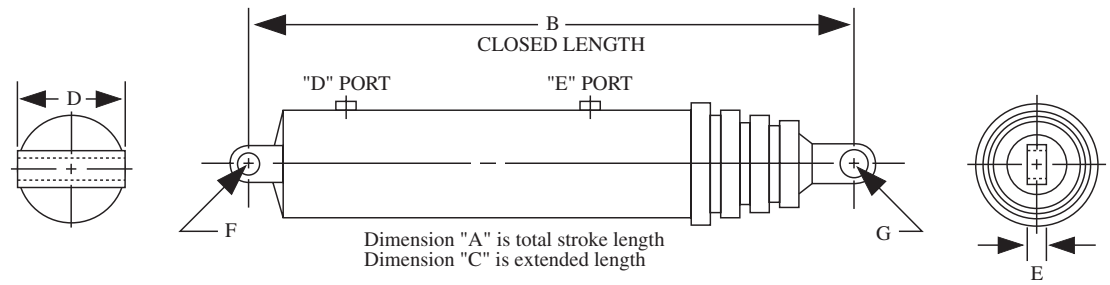
"DUAL-LIP" WIPER
 This dual lip design wiper of Hytrel is a more efficient "dirt wiper." The dual lip provides an improved means of keeping dirt out.

MANUFACTURERS SERVICE MANUALS ARE AVAILABLE. CALL FOR DETAILS.

Cylinder Identification C70000-814-200D



NOTE: "D" and "E" suffix in Part No. represents a specific port location.
 For dimensional data, consult our sales staff.
 A "T" suffix in Part No. represents Trunion Mount.



CYLINDERS



SINGLE ACTING TELESCOPIC CYLINDERS

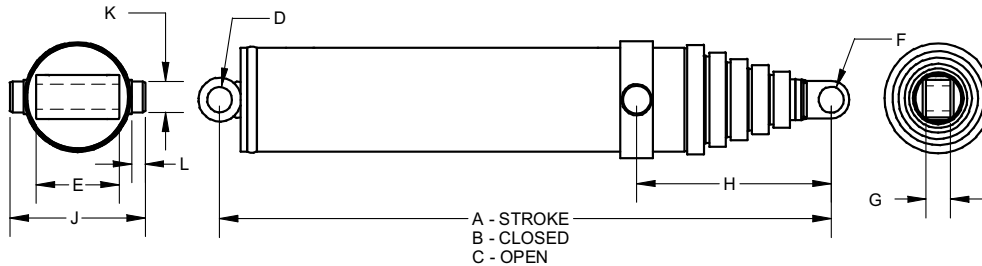
SOUTHERN HYDRAULIC CYLINDER, Inc.

These cylinders are available from Custom Hoists, Commercial, Hycy and SHC. Request the manufacturer you want.

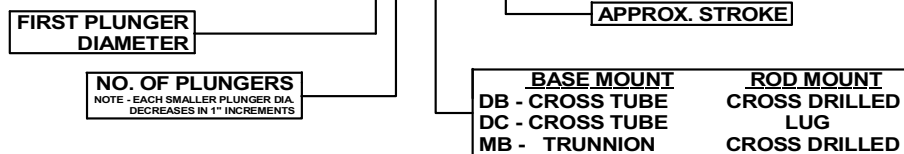
STANDARD SINGLE ACTING TELESCOPIC CYLINDER SPECIFICATIONS

Model Number	Stroke (A)	Closed (B)	Open (C)	Dia. Body	Stage Dia.			(D)	(E)	(F)	(G)	(H)	(J)	(K)	(L)	Ref Vol (Gal)	Ext Vol (Gal)	Dry Wt. (Lbs)
					1	2	3	1	2	3	1	2	3	1	2	3	1	2
SHC-M32DB-43	40.38	29.69	70.07	4.00	3	2	-	1.50	4.00	1.25	1.88	-	-	-	-	.58	1.46	60
SHC-M32DB-50	46.67	32.84	79.51	4.00	3	2	-	1.50	4.00	1.25	1.88	-	-	-	-	.66	1.68	66
SHC-M42DB-43	39.50	30.19	69.69	5.00	4	3	-	1.50	5.00	1.50	2.75	-	-	-	-	1.06	2.72	86
SHC-M42DB-50	47.25	33.69	80.94	5.00	4	3	-	1.50	5.00	1.50	2.75	-	-	-	-	1.23	3.23	95
SHC-M42MB-50	51.25	35.07	86.32	5.00	4	3	-	-	-	1.50	2.75	8.50	8.81	1.75	.88	1.33	3.50	97
SHC-M42DB-60	57.88	39.07	96.95	5.00	4	3	-	1.50	5.00	1.50	2.75	-	-	-	-	1.48	3.93	109
SHC-M42MB-65	65.00	42.07	107.07	5.00	4	3	-	-	-	1.50	2.75	8.50	8.81	1.75	.88	1.66	4.41	115
SHC-M43MB-74	73.88	34.63	108.51	5.00	4	3	2	-	-	1.25	1.88	8.50	8.81	1.75	.88	1.07	3.45	106
SHC-M43DB-75	67.34	33.62	100.96	5.00	4	3	2	1.50	5.00	1.25	1.88	-	-	-	-	.98	3.15	105
SHC-M43MB-75	68.25	32.75	101.00	5.00	4	3	2	-	-	1.25	1.88	8.50	8.81	1.75	.88	.99	3.19	100
SHC-M43DB-98	89.83	41.13	130.96	5.00	4	3	2	1.50	5.00	1.25	1.88	-	-	-	-	1.29	4.19	124
SHC-M43MB-98	96.42	42.19	138.61	5.00	4	3	2	-	-	1.25	2.00	8.69	8.81	1.75	.88	1.37	4.50	128
SHC-M53DB-60	57.11	29.81	86.92	6.00	5	4	3	1.50	6.25	1.50	2.75	-	-	-	-	1.39	4.56	122
SHC-M53DC-72	72.00	35.13	107.13	6.00	5	4	3	2.00	7.00	1.69	1.63	-	-	-	-	1.72	5.73	142
SHC-M53DB-74	69.14	33.82	102.96	6.00	5	4	3	1.50	6.25	1.50	2.75	-	-	-	-	1.65	5.51	137
SHC-M53MB-74	74.00	34.63	108.63	6.00	5	4	3	-	-	1.50	2.75	8.50	8.81	1.75	.88	1.75	5.89	141
SHC-M53DB-90	86.55	39.63	126.18	6.00	5	4	3	1.50	6.25	1.50	2.75	-	-	-	-	2.02	6.87	159
SHC-M53MB-90	86.06	38.63	124.69	6.00	5	4	3	-	-	1.50	2.75	8.50	8.81	1.75	.88	2.01	6.83	156

ALL ITEMS LISTED ARE STOCK ITEMS. ALL LISTED ITEMS ARE MARION STYLE CYLINDERS.
PORTS 1/2"-14 NPT ON SERIES 32, 42, 43, & 53 (SHC-M53DC-72, SHC-M53DC-84, & SHC-M53DC-84A USE 3/4"-14 NPT)
OTHER SIZES AND OPTIONS ARE AVAILABLE.



CYLINDER IDENTIFICATION SHC - M 53 DB - 75



SINGLE ACTING EXTEND LOAD CAPACITY

LOAD CAPACITY : LBS @ PSI

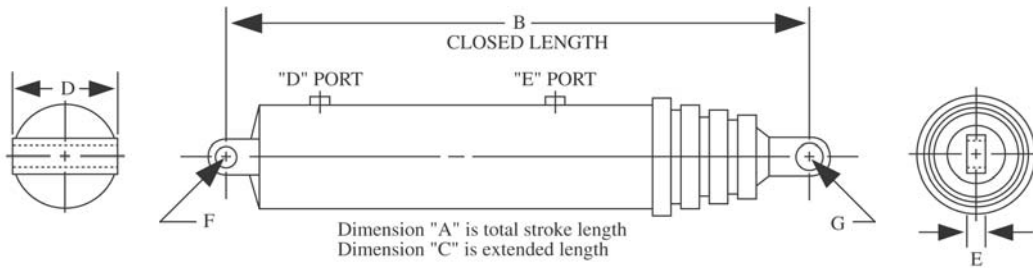
*ALL DIMENSIONS AND CALCULATIONS NOMINAL

PLUNGER DIA.	1500 PSI	2000 PSI	2500 PSI
2	4,700	6,280	7,850
3	10,600	14,130	17,670
4	18,850	25,130	31,410
5	29,450	39,270	49,080
6	42,410	56,540	70,680
7	57,720	76,960	96,210
8.25	80,180	106,910	133,640



SINGLE ACTING TELESCOPIC CYLINDER STOCK

These cylinders are available from Custom Hoists, Commercial, Hyco and SHC. Request the manufacturer you want



Stroke lengths for Hyco 70,000 series cylinders may be slightly different than those shown in chart. Please call our component group at 1-800-333-5617 for exact 70,000 series stroke lengths.

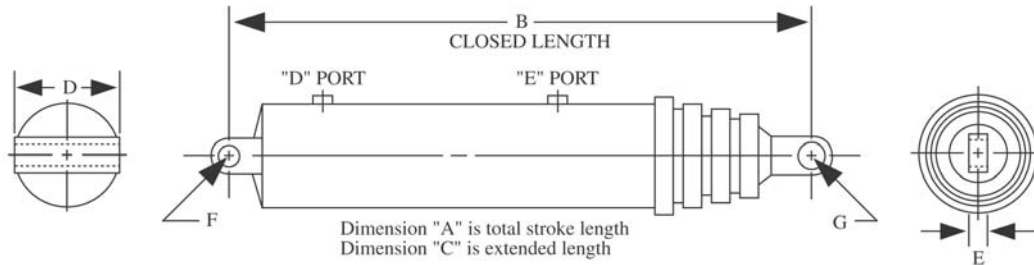
CYLINDER NO.	A	B	C	D	E	F	G
5372-SA	72.00	37.12	109.12	8.13	1.50	2.00	1.68
5384-SA	84.00	41.12	125.12	8.12	1.50	2.06	1.56
53104-SA	104.00	47.75	151.75	8.13	1.50	2.00	1.68
6384-SA	84.00	41.00	125.00	7.62	2.00	2.12	2.06
63104-SA	103.87	47.62	151.50	7.62	2.00	2.12	2.06
63108-SA	108.00	49.00	157.00	7.625	2.00	2.12	2.06
63111-SA	111.00	50.00	161.00	7.00	2.00	2.00	2.00
63120-SA	120.00	53.00	173.00	7.625	2.00	2.12	2.06
63120-TSA	120.00	53.375	173.375	TRIUNION MOUNT	4.00	N/A	1.56
63126-SA	126.00	55.00	181.00	7.62	2.00	2.12	2.06
D63128-SA	126.50	54.63	181.13	6.75	2.00	2.00	1.63
63140-TSA	139.87	60.00	199.97	TRIUNION MOUNT	4.00	N/A	1.56
64135-SA	134.88	47.13	182.00	8.00	2.69	1.75	1.50
64156-SA	155.87	52.37	208.12	8.00	2.68	1.87	1.56
73110-SA	110.63	50.06	160.69	8.25	2.00	2.00	2.00
73120-SA	120.00	53.12	173.12	8.625	1.50	2.12	2.06
D73126	125.25	55.12	180.37	6.75	2.00	2.00	1.63
73130-SA	130.12	56.50	186.62	8.625	1.50	2.12	2.06
73140-SA	140.00	60.00	200.00	8.25	2.00	2.00	2.00
D73142-SA	142.13	60.75	202.88	6.75	2.00	2.00	1.63
74120-SA	120.00	44.75	164.75	8.625	2.00	2.12	2.06
74135-SA	135.00	48.25	183.25	8.625	2.00	2.12	2.06
74140-SA	140.25	49.25	189.75	8.625	2.00	2.12	2.06
74156-SA	156.00	53.37	209.37	8.625	2.00	2.12	2.06
74161-SA	161.00	54.62	215.62	8.62	2.00	2.12	2.06
74167-SA	167.25	56.25	223.50	8.62	2.00	2.12	2.06
84148-SA	147.75	51.50	199.25	9.50	2.00	2.12	2.06
84156-SA	155.75	53.50	209.25	9.50	2.00	2.12	2.06
84170-SA	169.75	57.00	226.75	9.50	2.00	2.12	2.06
84180-SA	179.75	59.50	239.25	9.50	2.00	2.12	2.06
85170-SA	170.00	49.87	219.87	9.50	2.00	2.12	2.06
85190-SA	190.00	54.00	244.00	9.50	2.00	2.12	2.06
85197-SA	196.13	55.25	251.38	9.50	2.00	2.00	2.00
85220-SA	220.00	60.00	280.00	9.50	2.00	2.12	2.06
85220-TSA	218.25	60.38	278.63	TR	2.00	TR	2.00
85235-SA	235.00	65.00	300.00	9.50	2.00	2.12	2.06
85235-TSA	233.25	63.38	296.33	TR	2.00	TR	2.00
85250-SA	250.00	68.00	318.00	9.50	2.00	2.12	2.06
85250-TSA	248.25	68.38	316.63	TR	2.00	TR	2.00
85265-SA	265.00	71.00	336.00	9.50	2.00	2.12	2.06
85265-TSA	264.25	74.88	339.13	TR	2.00	TR	2.00

CYLINDERS



SINGLE ACTING TELESCOPIC CYLINDER STOCK

These cylinders are available from Custom Hoists, Commercial, Hyco and SHC. Request the manufacturer you want.



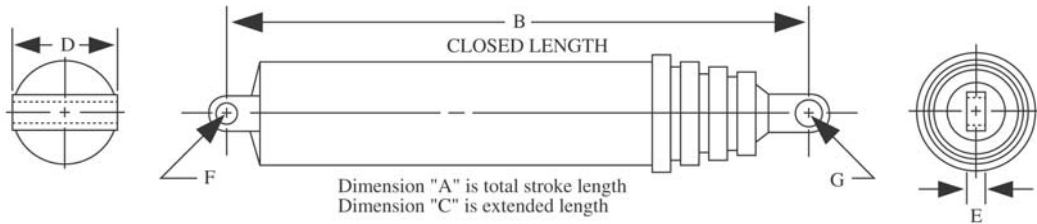
Stroke lengths for Hyco 70,000 series cylinders may be slightly different than those shown in chart. Please call our component group at 1-800-333-5617 for exact 70,000 series stroke lengths.

CYLINDER NO.	A	B	C	D	E	F	G
825190-SA	190.00	54.00	244.00	10.25	2.00	2.12	2.06
825220-SA	220.00	60.00	280.00	10.25	2.00	2.12	2.06
825235-SA	235.00	65.00	300.00	10.25	2.00	2.12	2.06
825250-SA	250.00	68.00	318.00	10.25	2.00	2.12	2.06
825265-SA	264.62	74.50	339.12	10.25	2.00	2.12	2.06
825280-SA	279.62	77.62	357.25	10.25	2.00	2.12	2.06
95220-SA	219.75	60.12	279.87	10.75	2.00	2.12	2.06
95235-SA	234.75	65.00	299.75	10.75	2.00	2.12	2.06
95250-SA	249.75	72.62	322.37	10.75	2.00	2.12	2.06
95265-SA	264.75	75.62	340.37	10.75	2.00	2.12	2.06
975220-SA	219.75	60.00	280.00	12.00	2.00	2.12	2.06
975235-SA	234.75	65.25	300.00	12.00	2.00	2.12	2.06
975250-SA	249.75	72.62	322.37	12.00	2.00	2.12	2.06
HPT53100	99.12	46.25	145.37	7.75	1.50	2.06	1.78
HPT53110	105.12	47.87	153.00	7.75	1.50	2.06	1.78
HPT53120	122.37	54.00	176.37	7.75	1.50	2.06	1.78
HPT53130	127.62	54.50	182.12	7.75	1.50	2.06	1.78
HPT63120	120.75	54.00	174.75	8.00	2.00	2.50	2.25
HPT63130	125.25	55.50	180.75	8.00	2.00	2.50	2.25
HPT63140	138.75	60.00	198.75	8.00	2.00	2.50	2.25
HPT63160	160.12	69.12	229.25	8.00	2.00	2.50	2.25
475	43.12	31.68	74.81	1.50	2.50	3.37	1.81
495	64.75	31.75	96.50	1.50	2.50	3.37	1.81
498	89.50	41.87	131.37	1.50	2.50	3.37	1.81
SHC-M32DB-43	40.13	29.69	69.82	4.00	2.00	1.50	1.25
SHC-M32DB-50	47.94	33.47	81.41	4.00	2.00	1.50	1.25
SHC-M42DB-43	39.50	30.19	69.90	5.00	3.00	1.50	1.50
SHC-M42DB-50	51.25	36.13	87.38	5.00	3.00	1.50	1.50
SHC-M42MB-50	51.25	35.07	86.32	TR	3.00	TR	1.50
SHC-M42DB-60	60.00	40.63	100.63	5.00	3.00	1.50	1.50
SHC-M42MB-65	65.00	42.07	107.07	TR	3.00	TR	1.50
SHC-M43DB-75	68.62	33.69	102.31	5.00	2.00	1.50	1.25
SHC-M43MB-75	68.25	32.50	100.75	TR	2.00	TR	1.25
SHC-M53DB-60	57.75	30.00	87.75	6.00	3.00	1.50	1.50
SHC-M53DB-74	74.00	35.44	109.44	6.00	3.00	1.50	1.50
SHC-M53MB-74	74.00	34.38	108.38	TR	3.00	TR	1.50
SHC-M53MB-90	86.06	38.63	124.69	TR	3.00	TR	1.50



DOUBLE ACTING TELESCOPIC CYLINDERS

These cylinders are available from Custom Hoists, Commercial, and Hyco. Request the manufacturer you want. See page 18, 23 & 24 for specifications.



CYLINDERS

CYLINDER NO.	A	B	C	D	E	F	G
52112-DA	111.75	75.50	187.25	2.00	2.00	2.01	2.01
53110-DA	109.62	56.75	166.37	2.00	2.00	3.03	1.56
53155-DA	155.75	75.50	231.25	2.00	2.00	2.00	1.50
53182-DA	182.00	81.00	263.00	3.87	6.50	2.00	2.00
6282-DA	82.00	56.50	138.50	2.25	2.25	3.03	3.03
6397-DA	97.12	52.37	149.50	1.50	1.50	1.28	1.28
63108-DA	107.62	50.75	158.37	7.12	3.87	1.78	1.78
63118-DA	118.00	58.50	176.50	3.00	4.00	2.50	2.50
63124-DA	124.50	76.87	201.48	2.00	2.00	2.031	2.06
63132-DA	131.62	62.37	194.00	7.12	3.87	1.78	1.78
63167-DA	167.00	85.25	252.25	4.00	3.69	2.00	2.00
64118-DA	118.13	49.38	167.50	2.25	2.25	1.50	1.50
64136-DA	135.62	49.37	185.00	2.00	2.25	1.56	1.56
64150-DA	150.00	56.56	206.56	2.25	2.25	1.50	1.50
72156-DA	156.12	96.00	252.12	N/A	2.00	N/A	2.06
74131-DA	131.50	53.37	184.87	1.50	1.50	1.28	1.28
74171-DA	171.12	62.37	233.50	7.00	4.00	1.78	1.78
83126-DA	126.00	72.00	198.00	3.00	3.00	2.51	2.51
84176-TD2	176.25	69.00	245.25	TRIUNION MOUNT	2.00	TRIUNION MOUNT	1.75
84176-TD3	176.25	69.00	245.25	TRIUNION MOUNT	2.00	N/A	1.76
84178-DA	178.25	69.00	247.25	2.00	2.00	1.78	1.78
85125-DA	125.00	49.75	174.75	2.50	2.50	2.00	2.00
85156-DA	155.625	55.50	211.125	2.00	2.00	2.00	2.00
85195-DA	195.00	69.37	264.87	2.00	2.00	2.03	2.03
85220-TD2	220.00	69.25	289.25	TRIUNION MOUNT	2.00	N/A	1.76
85220-TD3	220.25	69.25	289.50	TRIUNION MOUNT	2.00	N/A	1.76
85300-DA	300.25	87.37	387.62	1.75	2.00	2.00	2.18
85348-DA	347.87	100.00	447.87	2.00	2.00	2.06	2.18
85378-DA	378.00	104.75	482.75	2.00	2.00	2.12	2.06
86177-DA	176.75	53.37	230.12	1.50	1.50	1.28	1.28
915125-DA	125.00	49.75	174.75	2.50	2.50	2.00	2.00
95160-DA	159.75	61.00	220.75	2.00	2.00	2.02	2.02
96170-DA	169.75	50.625	220.37	2.50	2.50	2.00	2.00
96199-DA	199.12	57.87	257.00	2.00	2.00	2.03	2.03
96412-DA	412.25	99.62	511.87	TRIUNION MOUNT	2.00	TRIUNION MOUNT	2.06
96456-DA	456.50	107.00	563.50	TRIUNION MOUNT	2.00	TRIUNION MOUNT	2.06
974176-DA	176.12	69.12	245.25	3.00	3.00	2.52	2.52
974190-DA	189.62	71.00	260.62	2.25	2.00	2.25	2.02
976199-DA	199.12	57.87	257.00	2.00	2.00	2.03	2.03



DOUBLE ACTING TELESCOPIC CYLINDERS

These cylinders weights are average weights for Custom Hoists and Hyco manufactured cylinders. Cylinders manufactured by Commercial Intertech are usually 50-70 pounds heavier than weights listed.

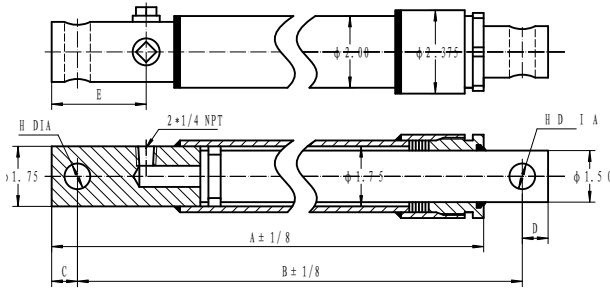
CYLINDER #	WT. (LBS.)	CYLINDER #	WT. (LBS.)	CYLINDER #	WT. (LBS.)	CYLINDER #	WT. (LBS.)
5360-SA	134	825235-SA	725	85220-TD3	764	HL-1-4106	67
5372-SA	160	825250-SA	765	85300-DA	848	HL-1-4108	90
5384-SA	175	825265-SA	795	85348-DA	875	HL-1-4110	105
53104-SA	200	825280-SA	835	85378-DA	952	HL-1-4272	68
6384-SA	215	95220-SA	780	86177-DA	485	HL-1-4305	50
63104-SA	249	95235-SA	825	915125-DA	528	HL-1-4328	185
63108-SA	256	95250-SA	868	95160-DA	740	HL-1-4330	192
63111-SA	260	95265-SA	890	96170-DA	568	HL-1-4339	104
63120-SA	279	975220-SA	858	96199-DA	795	HL-1-4340	175
63120-TSA	279	975235-SA	967	96412-DA	1350	HL-1-4341	85
63126-SA	286	975250-SA	1076	96456-DA	1408	HL-1-4348	170
D63128-SA	278	HPT53100	190	974176-DA	978	HL-1-4884	150
63140-TSA	330	HPT53110	193	974190-DA	995	HL-1-4887	121
64135-SA	260	HPT53120	230	976199-DA	864	LCH-15527	97
64156-SA	310	HPT53130	214	475	102	LCH-2R1006A	168
73110-SA	350	HPT63120	267	495	102	LCH-PO-1166	190
73120-SA	336	HPT63130	270	498	132	LCH-PO-265	102
D73126	355	HPT63140	288	D3021GDA	55	MX-401222	260
73130-SA	358	HPT63160	328	D3526GDA	70	MX-401282	105
73140-SA	404	52112-DA	318	D4021EDA	96	MX-401826	51
D73142-SA	383	53110-DA	246	D4028EDA	105	MX-404614	176
74120-SA	311	53155-DA	307	D4030FDA	96	PG-3128C	67
74135-SA	335	53182-DA	357	D4035HDA	125	PG-6042BDA	239
74140-SA	347	6282-DA	253	D4128EDA	91	PG-7078DA	442
74156-SA	370	6397-DA	275	D4522JDA	84	PKM-1341-LM	61
74161-SA	390	63108-DA	283	D4522EDA	100	PKM-1351-LM	214
74167-SA	390	63118-DA	317	D4526BDA	104	PKM-2162-LM	24
84148-SA	451	63124-DA	383	D4548BDA	165	SHC-M32DB-43	57
84156-SA	455	63132-DA	332	D5532EDA	135	SHC-M32DB-50	63
84170-SA	494	63167-DA	320	DD-BB8133-1	188	SHC-M42DB-43	81
84180-SA	524	64118-DA	280	DD-BB8134-1	150	SHC-M42DB-50	91
85170-SA	450	64136-DA	271	DD-BB8281-1	114	SHC-M42MB-50	100
85190-SA	506	64150-DA	305	DD-BB8374-1	174	SHC-M42DB-60	115
85197-SA	525	72156-DA	630	DD-BB8379-1	110	SHC-M42MB-65	116
85220-SA	567	74131-DA	334	DD-BB8748-1	85	SHC-M43DB-75	98
85220-TSA	585	74171-DA	575	DD-AB19461	368	SHC-M43MB-75	107
85235-SA	619	83126-DA	555	DD-AB19774	110	SHC-M53DB-60	115
85235-TSA	637	84176-TD2	700	DD-AB19775	175	SHC-M53DB-74	137
85250-SA	654	84176-TD3	550	HL-1-4070	83	SHC-M53MB-74	140
85250-TSA	672	84178-DA	560	HL-1-4093	150	SHC-M53MB-90	154
85265-SA	674	85125-DA	510	HL-1-4094	125		
85265-TSA	692	85156-DA	495	HL-1-4100	73		
825190-SA	595	85195-DA	620	HL-1-4101	100		
825220-SA	667	85220-TD2	764	HL-1-4103	119		



SNOW PLOW CYLINDERS

CYLINDERS

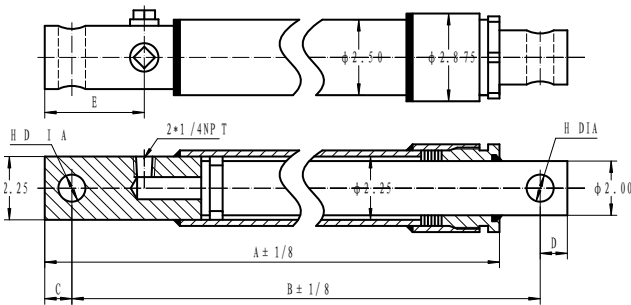
SNOW PLOW



FEATURES:

- Ductile iron piston.
- Ductile iron gland, drilled oil passages.
- Honed steel tube, precision finished for extended seal life.
- High tensile, hard chrome plated rod.
- Ductile iron end mounts, female clevises with pins and clips included.
- Tube Seal: O-ring
- Rod Seal: Deep polypak with B lip design; metal canned wiper.
- 2-Piece 93A urethane piston seal, with a 70A nitrile energizer.
- All Seals: Manufactured to US specifications.

PART NUMBER	DESCRIPTION	A	B	C & D	E	H	WT LBS.	PRICE
HSPM-1506-0625	MYER 1.5" X 6"	11-7/8	12.00	11/16	2.00	5/8	12	\$ 74.94
HSPM-1510-0625	MYER 1.5" X 10"	15-7/8	16-1/4	11/16	2.00	5/8	14	85.30
HSPM-1512-0625	MYER 1.5" X 12"	17-7/8	18.00	11/16	2.00	5/8	15	90.21
HSPW-1506-0750	WESTREN 1.5" X 6"	12-5/8	13.00	11/16	2-3/4	3/4	12	74.94
HSPW-1508-0750	WESTREN 1.5" X 8"	14-5/8	15-1/4	11/16	2-3/4	3/4	13	80.48
HSPW-1510-0750	WESTREN 1.5" X 10" X 1"	16-5/8	17-1/4	11/16	2-3/4	3/4	14	85.30
HSPW-1510-1000	WESTREN 1.5" X 10" X 1"	16-5/8	17-1/2	11/16	2-3/4	1.00	14	85.30
HSPA-1510-0750	ARTIC 1.5" X 10"	16-5/8	17.00	3/4	2-3/4	3/4	14	85.30
HSPA-1512-0750	ARTIC 1.5" X 12"	16-5/8	19.00	3/4	2-3/4	3/4	15	90.21
HSPA-1512-1000	FISHER 1.5" X 12"	18-7/16	19-3/8	3/4	2-5/8	1.00	15	90.21
HSPA-1510-1000	FISHER & DIAMOND 1.5" X 10"	16-3/8	17-1/4	3/4	2-11/16	1.00	14	90.21

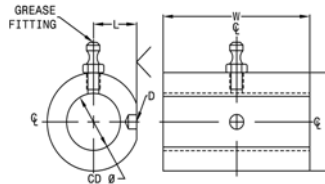


PART NUMBER	DESCRIPTION	A	B	C & D	E	H	WT LBS.	PRICE
HSPM-2012-0625	MYER 2.0" X 12"	17-1/4	18.00	3/4	2-3/16	5/8	18	\$ 115.03
HSPW-2016-1000	WESTREN & DIAMOND 2.0" X 16"	22-5/8	23-5/8	11/16	2-3/4	1.00	21	133.27
HSPW-2006-0750	WESTREN 2.0" X 6"	12-5/8	13-3/16	3/4	2-3/4	3/4	13	97.88
HSPW-2010-1000	WESTREN 2.0" X 10"	16-5/8	17-1/4	11/16	2-3/4	1.00	16	111.73
HSPF-2016-125	FISHER 2.0" X 16"	22-1/2	23-1/4	7/8	2-3/4	1-1/4	20	133.28



MOBILE MOUNTS

Cross Tube Mount

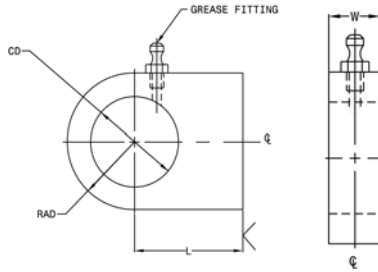


PART NUMBER	CD	W	B	L	D	PRICE
CM-CT251015	1.00	2.50	1.50	0.69	.250 x .09	\$ 139.20
CM-CT301015	1.00	3.00	1.50	0.69	.250 x .09	63.32
CM-CT351015	1.00	3.50	1.50	0.69	.250 x .09	74.21
CM-CT401015	1.00	4.00	1.50	0.69	.250 x .09	12.93
CM-CT451015	1.00	4.50	1.50	0.69	.250 x .09	124.61
CM-CT271017	1.00	2.75	1.75	0.81	.250 x .15	177.04
CM-CT321017	1.00	3.25	1.75	0.81	.250 x .15	64.06
CM-CT371017	1.00	3.75	1.75	0.81	.250 x .15	174.17
CM-CT421017	1.00	4.25	1.75	0.81	.250 x .15	82.34
CM-CT471017	1.00	4.75	1.75	0.81	.250 x .15	72.36
CM-CT521017	1.00	5.25	1.75	0.81	.250 x .15	74.69
CM-CT271220	1.25	2.75	2.00	0.88	.250 x .15	166.11
CM-CT321220	1.25	3.25	2.00	0.88	.250 x .15	172.48
CM-CT371220	1.25	3.75	2.00	0.88	.250 x .15	177.04
CM-CT421220	1.25	4.25	2.00	0.88	.250 x .15	181.27
CM-CT471220	1.25	4.75	2.00	0.88	.250 x .15	187.62
CM-CT521220	1.25	5.25	2.00	0.88	.250 x .15	130.25
CM-CT601220	1.25	6.00	2.00	0.88	.250 x .15	73.31
CM-CT701220	1.25	7.00	2.00	0.88	.250 x .15	148.17
CM-CT301525	1.50	3.00	2.50	1.13	.250 x .19	170.98
CM-CT421525	1.50	4.25	2.50	1.13	.250 x .19	150.95
CM-CT471525	1.50	4.75	2.50	1.13	.250 x .19	178.79
CM-CT551525	1.50	5.50	2.50	1.13	.250 x .19	125.79
CM-CT601525	1.50	6.00	2.50	1.13	.250 x .19	195.73
CM-CT701525	1.50	7.00	2.50	1.13	.250 x .19	130.09
CM-CT321727	1.75	3.25	2.75	1.25	.250 x .19	100.27
CM-CT471727	1.75	4.75	2.75	1.25	.250 x .19	78.96
CM-CT551727	1.75	5.50	2.75	1.25	.250 x .19	88.81
CM-CT601727	1.75	6.00	2.75	1.25	.250 x .19	112.05
CM-CT701727	1.75	7.00	2.75	1.25	.250 x .19	149.46
CM-CT352030	2.00	3.50	3.00	1.38	.250 x .19	180.06
CM-CT472030	2.00	4.75	3.00	1.38	.250 x .19	89.31
CM-CT552030	2.00	5.50	3.00	1.38	.250 x .19	120.34
CM-CT602030	2.00	6.00	3.00	1.38	.250 x .19	215.04
CM-CT702030	2.00	7.00	3.00	1.38	.250 x .19	260.24

MOBILE MOUNTS



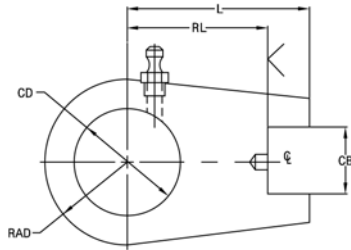
MOBILE WELDED MOUNTS



Material: 50K Min. Yield Plate

Welded Base End Spherical Mount

PART NUMBER	CD	L	RAD	W	PIN DIAMETER	DESIGNED SPHERICAL #	MAX PULL AT YEILD	PRICE
CM-WBES-10	1.625	2.00	1.25	0.75	1.00	SB99100	15,000#	\$ 103.30
CM-WBES-12	2.000	2.00	1.50	0.94	1.25	SB99125	20,000#	117.69
CM-WBES-15	2.437	2.50	1.88	1.12	1.50	SB99150	35,000#	130.92
CM-WBES-17	2.812	2.50	2.00	1.31	1.75	SB99175	35,000#	133.30
CM-WBES-20	3.187	2.75	2.38	1.50	2.00	SB99200	55,000#	159.94
CM-WBES-25	3.937	3.25	3.00	1.88	2.50	SB99250	95,000#	200.67



Material: 50K Min. Yield Plate

Welded Rod End Spherical Mount

PART NUMBER	CD	L	RAD	W	D	CB	RL	PIN DIAMETER	DESIGNED SPHERICAL #	PRICE
CM-WRES-10	1.625	2.750	1.25	0.75	.250 X .19	1.015	2.12	1.00	SB99100	\$ 103.30
CM-WRES-12	2.000	3.000	1.50	0.94	.250 X .19	1.265	2.25	1.25	SB99125	117.69
CM-WRES-15	2.437	3.250	1.88	1.12	.250 X .19	1.515	2.50	1.50	SB99150	130.92
CM-WRES-17	2.812	3.750	2.00	1.31	.250 X .19	1.515	2.75	1.75	SB99175	133.30
CM-WRES-20	3.187	4.000	2.38	1.50	.250 X .19	2.015	3.00	2.00	SB99200	159.94
CM-WRES-25	3.937	4.750	3.00	1.88	.250 X .19	2.515	3.50	2.50	SB99250	200.67



ACCESSORIES



ACCESSORIES

SPECIFICATIONS:

- Black epox coated metal shroud with Polyamid sight tube
- Suitable for use with Mineral and Petroleum based hydraulic fluids, lubricants and gasoline
- Maximum operating temperature 194°F 90°C)
- Thermometer Calibration from -20°F to 180°F (-10°C to 80°C)
- SNA 076 has M10 bolts as standard
- SNA 127, SNA 254 has M12 bolts as standard
- Tightening Torque 70"/lb (7.9Nm)

Fluid Level Gauges



PART NUMBER	DESCRIPTION
STF-SNA076BS0-10	FLUID LEVEL GAUGE 3" long without thermometer
STF-SNA076BST-10	FLUID LEVEL GAUGE 3" long with thermometer
STF-SNA127BST-12	FLUID LEVEL GAUGE 5" long with thermometer
STF-SNA127BN012	FLUID LEVEL GAUGE 5" long without thermometer

SPECIFICATIONS:

- Chrome-Plated Metal Cap
- 30 Mesh Metal Basket
- Cork Gaskets
- Air Flow to 25cfm

Filler Breather



PART NUMBER	DESCRIPTION
STF-SES6-P-40-N06	FILLER BREATHER WEATHER PROOFED MINI 40 MICRON 3/8" NPT
STF-SES3-P-40-S80	FILLER BREATHER WEATHER PROOFED 40 MICRON 80MM LONG BASKET
STF-SES5-P-40-N12'	FILLER BREATHER WEATHER PROOFED 40 MICRON 3/4" NPT
STF-SES3-40-S80	FILLER BREATHER 40 MICRON 80MM LONG BASKET
STF-SES3L-40-S80	FILLER BREATHER LOCKING TAB 40 MICRON 80MM LONG BASKET
STF-SES3-40-S150	FILLER BREATHER 40 MICRON 150MM LONG BASKET
STF-SES6-40-N04	FILLER BREATHER MINI 40 MICRON 1/4" NPT
STF-SES6-40-N06	FILLER BREATHER MINI 40 MICRON 3/8" NPT
STF-SES5-40-N12	FILLER BREATHER 40 MICRON 3/4" NPT

NOTE*(ABOVE FILLER BREATHERS ARE CHROME PLATED THAT ARE NOT WEATHER PROOFED)



ACCESSORIES



Pressure Gauges



SPECIFICATIONS:

- Copper alloy bourden tube
- Dual scales
- Built in relief valve
- Operating temperatures
Ambient - 4°F to 140°F (-20°C to 60°C)
Media 150°F (+60°C)
- Acrylic lens
- Accuracy = 1.5% of full scale
- Built in snubber

PART NUMBER	DESCRIPTION	
STF-SPG-63-3030S	PRESSURE GAUGE 2.5"	30" HG - 30 PSI BOTTOM MOUNT
STF-SPG-63-100S	PRESSURE GAUGE 2.5"	100 PSI BOTTOM MOUNT
STF-SPG-63-160S	PRESSURE GAUGE 2.5"	160 PSI BOTTOM MOUNT
STF-SPG-63-500S	PRESSURE GAUGE 2.5"	500 PSI BOTTOM MOUNT
STF-SPG-63-600S	PRESSURE GAUGE 2.5"	600 PSI BOTTOM MOUNT
STF-SPG-63-1000S	PRESSURE GAUGE 2.5"	1,000 PSI BOTTOM MOUNT
STF-SPG-63-1500S	PRESSURE GAUGE 2.5"	1,500 PSI BOTTOM MOUNT
STF-SPG-63-2000S	PRESSURE GAUGE 2.5"	2,000 PSI BOTTOM MOUNT
STF-SPG-63-3000S	PRESSURE GAUGE 2.5"	3,000 PSI BOTTOM MOUNT
STF-SPG-63-5000S	PRESSURE GAUGE 2.5"	5,000 PSI BOTTOM MOUNT
STF-SPG-63-6000S	PRESSURE GAUGE 2.5"	6,000 PSI BOTTOM MOUNT
STF-SPG-63-10000S	PRESSURE GAUGE 2.5"	10,000 PSI BOTTOM MOUNT
STF-SPG-63-3000P-U	PRESSURE GAUGE 2.5"	3,000 PSI PANEL MOUNT
STF-SPG-63-300S	PRESSURE GAUGE 2.5"	300 PSI BOTTOM MOUNT
STF-SPG-63-5000P-U	PRESSURE GAUGE 2.5"	5,000 PSI PANEL MOUNT
STF-SPG-100-300P-U	PRESSURE GAUGE 4"	300 PSI PANEL MOUNT
STF-SPG-100-10000S	PRESSURE GAUGE 4"	10,000 PSI BOTTOM MOUNT

* 1/4" NPT

ACCESSORIES

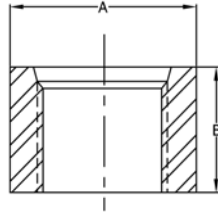


PORTS/LOCK NUTS



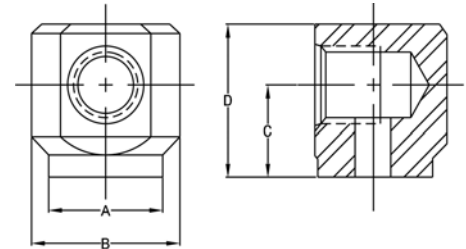
Ports

O-ring Boss Half Coupling Port



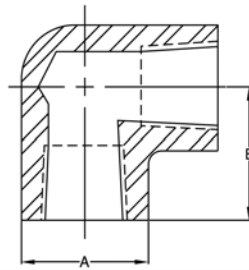
PART NUMBER	PORT SIZE	A	B	PRICE
CM-PO65304	#4 SAE	0.88	1.00	\$ 8.85
CM-PO65305	#5 SAE	0.88	0.75	10.36
CM-PO65306	#6 SAE	1.00	1.00	9.18
CM-PO65308	#8 SAE	1.25	1.06	9.52
CM-PO65310	#10 SAE	1.38	1.06	9.40
CM-PO65312	#12 SAE	1.50	1.28	13.26
CM-PO65314	#14 SAE	1.63	1.25	15.54
CM-PO65316	#16 SAE	1.75	1.28	19.11
CM-PO65320	#20 SAE	2.25	1.28	25.13
CM-PO65324	#24 SAE	2.50	1.00	39.34

90 Degree O-ring Boss Port



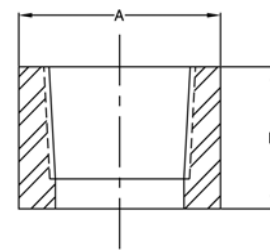
PART NUMBER	BAR SIZE	A	B	C	D	PRICE
CM-PO65604	#4 SAE	0.75	1.12	0.75	1.12	\$20.29
CM-PO65606	#6 SAE	0.87	1.25	0.81	1.25	22.20
CM-PO65608	#8 SAE	1.25	1.62	1.00	1.62	24.30
CM-PO65610	#10 SAE	1.25	1.75	1.12	1.88	27.80
CM-PO65612	#12 SAE	1.50	2.12	1.19	2.00	40.55
CM-PO65616	#16 SAE	1.50	2.25	1.25	2.38	53.45

90 Degree Pipe Thread Port



PART NUMBER	PORT SIZE	A	B	PRICE
CM-PO65225	1/4" NPT	0.75	1.00	\$ 12.61
CM-PO65237	3/8" NPT	0.88	1.00	18.61
CM-PO65250	1/2" NPT	1.12	1.25	28.06
CM-PO65275	3/4" NPT	1.38	1.38	44.94
CM-PO652751	1" NPT	1.75	1.62	67.44

Pipe Thread Half Coupling



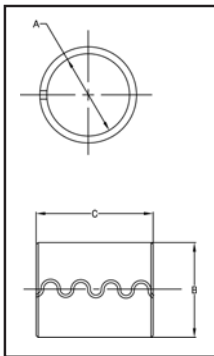
PART NUMBER	PORT SIZE	A	B	PRICE
CM-PO65025	1/4" NPT	0.88	1.06	\$ 3.00
CM-PO65037	3/8" NPT	1.00	1.00	3.09
CM-PO65050	1/2" NPT	1.25	1.06	4.14
CM-PO65075	3/4" NPT	1.50	1.28	4.58
CM-PO65100	1" NPT	1.75	1.28	9.18
CM-PO65125	1-1/4" NPT	2.25	1.28	16.40
CM-PO65150	1-1/2" NPT	2.75	1.28	19.69



SPLIT TENSION BUSHINGS/PLUGS/VENTS



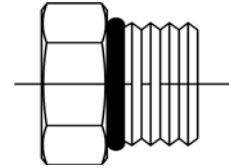
Material: Hardened Spring Steel



Split Tension Bushing

PART NUMBER	A	B	C	HOUSING DIAMETER	LIST PRICE
CM-99507	0.75	1.00	2.00	1.002/1.006	\$23.09
CM-99508	0.88	1.00	2.00	1.002/1.006	24.46
CM-99510	1.00	1.25	0.75	1.252/1.256	12.90
CM-99514	1.00	1.25	0.88	1.252/1.256	15.28
CM-99511	1.00	1.25	1.00	1.252/1.256	15.86
CM-99513	1.00	1.25	1.25	1.252/1.256	15.57
CM-99512	1.00	1.25	1.50	1.252/1.256	21.22
CM-99519	1.25	1.50	1.25	1.502/1.506	23.12
CM-99522	1.25	1.50	1.50	1.502/1.506	26.86
CM-99521	1.25	1.50	2.00	1.502/1.506	29.65
CM-99531	1.50	1.75	1.50	1.752/1.756	29.21
CM-99533	1.50	1.75	2.00	1.752/1.756	32.04
CM-99535	1.50	1.75	3.00	1.752/1.756	43.77
CM-99534	1.50	1.88	2.00	1.877/1.881	45.23
CM-995335	1.50	1.75	2.50	1.752/1.756	37.68
CM-99537	1.50	2.00	1.25	2.002/2.006	36.76
CM-995371	1.50	2.00	2.00	2.002/2.006	61.28
CM-99540	1.75	2.00	1.25	2.002/2.006	27.75
CM-995375	1.75	2.00	1.50	2.002/2.006	31.12
CM-99538	1.75	2.00	2.00	2.002/2.006	34.40
CM-99539	1.75	2.00	2.25	2.002/2.006	37.46
CM-995410	1.75	2.00	3.00	2.002/2.006	45.68
CM-99541	1.75	2.25	2.00	2.252/2.256	59.79
CM-99546	2.00	2.38	3.00	2.377/2.381	81.00
CM-99549	2.00	2.25	1.50	2.252/2.256	32.93
CM-99550	2.00	2.25	2.50	2.252/2.256	42.40
CM-99547	2.00	2.50	2.00	2.502/2.506	72.53
CM-99545	2.00	2.50	2.50	2.502/2.506	86.17
CM-99556	2.50	3.00	2.00	3.002/3.006	86.63
CM-99557	2.50	3.00	3.00	3.002/3.006	124.76
CM-99565	3.00	3.50	2.50	3.502/3.506	123.87

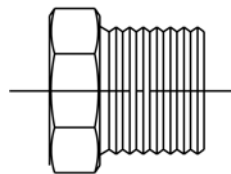
Steel Plug (O-Ring Boss)



PART NUMBER	PORT SIZE	LIST PRICE
CM-74004	#4 SAE	\$ 1.15
CM-74005	#5 SAE	2.35
CM-74006	#6 SAE	1.32
CM-74008	#8 SAE	1.90
CM-74010	#10 SAE	2.52
CM-74012	#12 SAE	4.79
CM-74014	#14 SAE	9.98
CM-74016	#16 SAE	10.78
CM-74020	#20 SAE	14.15

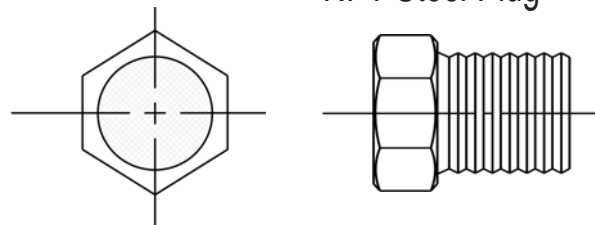
SPLIT TENSION BUSHING/PLUGS/VENTS

NPT Air Vent



PART NUMBER	PORT SIZE	LIST PRICE
CM-77002	1/8" NPT	\$ 13.29
CM-77004	1/4" NPT	14.76
CM-77006	3/8" NPT	15.47
CM-77008	1/2" NPT	19.48
CM-77010	3/4" NPT	23.60

NPT Steel Plug



PART NUMBER	PORT SIZE	LIST PRICE
CM-74112	1/8" NPT	\$.62
CM-74125	1/4" NPT	.62
CM-74137	3/8" NPT	.89
CM-74150	1/2" NPT	7.59
CM-74175	3/4" NPT	1.06
CM-74199	1" NPT	2.90
CM-74200	1-1/4" NPT	6.67



Open up to see the full range of seals, wipers, guide rings and back-up rings

1-877-905-SEAL

